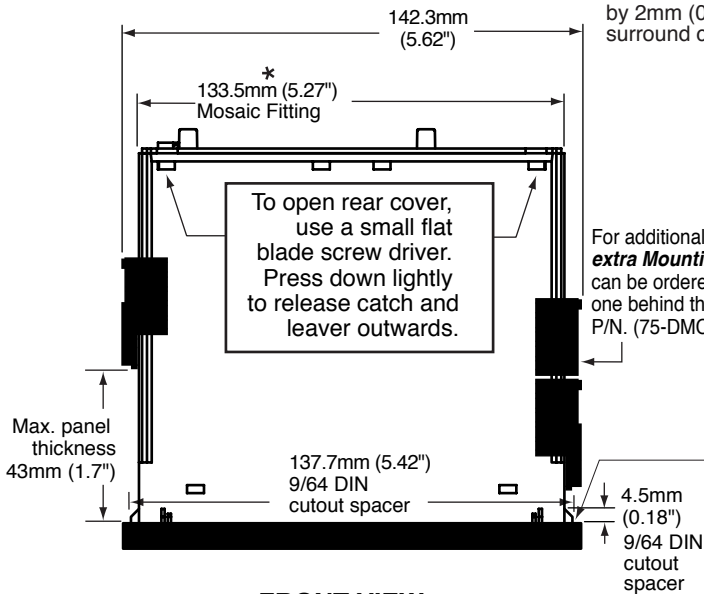


9/64 DIN 144x36mm (5.69"x1.42") Case Dimensions and Panel Cutout

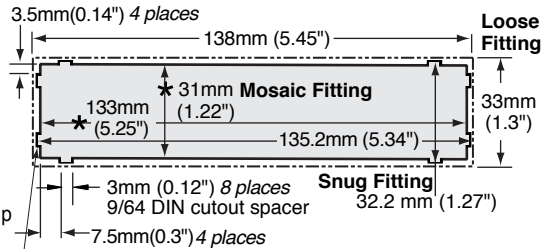
TOP VIEW



★These dimensions are increased by 2mm (0.08") when the metal surround case is installed.

PANEL CUTOUT

Case will mount in standard DIN cutouts

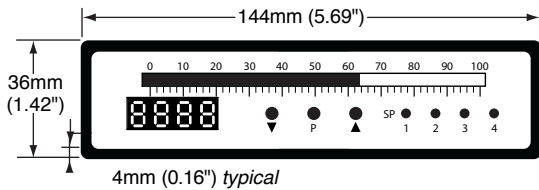


For additional strength, **extra Mounting Slide Clips** can be ordered and doubled up one behind the other. P/N. (75-DMC144X36)

For extra strength in portable applications, the 8 DIN spacers should be snipped off and the **Mosaic fitting** cutout used.

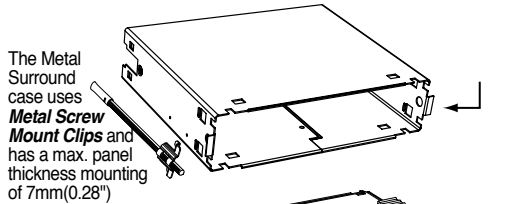
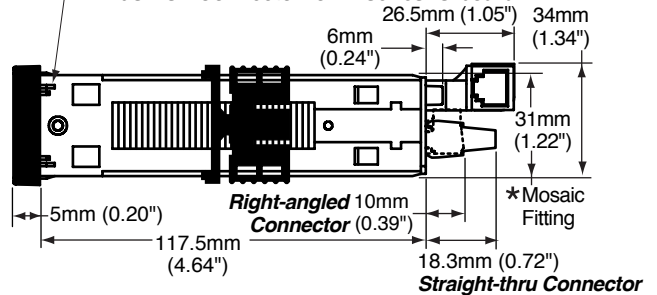
FRONT VIEW

9/64 DIN 36x144 mm

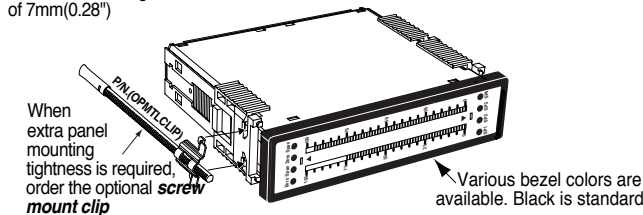


SIDE VIEW

Push-On Connector for FI series IO board

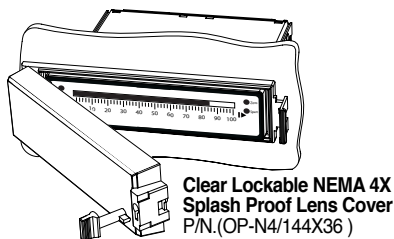


The Metal Surround case uses **Metal Screw Mount Clips** and has a max. panel thickness mounting of 7mm(0.28")

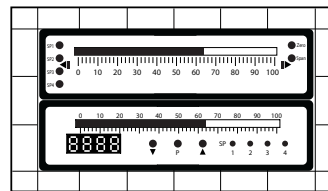


When extra panel mounting tightness is required, order the optional **screw mount clip**

Various bezel colors are available. Black is standard



Clear Lockable NEMA 4X Splash Proof Lens Cover
P/N.(OP-N4/144X36)

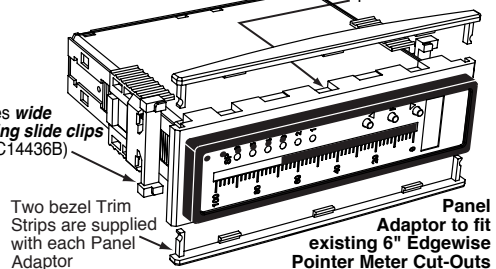


Panel adaptor plates are available to retrofit most existing panel cutouts.

The 144x36mm case is particularly suitable for mounting in mosaic panels or thick insulative panels. They can also stack mount, 2 up in existing cutouts for 9/32 DIN (72x144mm) .

The adapter snaps on the 144x36 mm (5.69"x1.42") case and enables single unit or stack mounting in an existing 6" edgewise pointer meter cut-out.

Adaptor uses **wide jaw mounting slide clips** P/N.(75DMC14436B)



Two bezel Trim Strips are supplied with each Panel Adaptor

Panel Adaptor to fit existing 6" Edgewise Pointer Meter Cut-Outs
P/N.(OP-PA/144x36)