

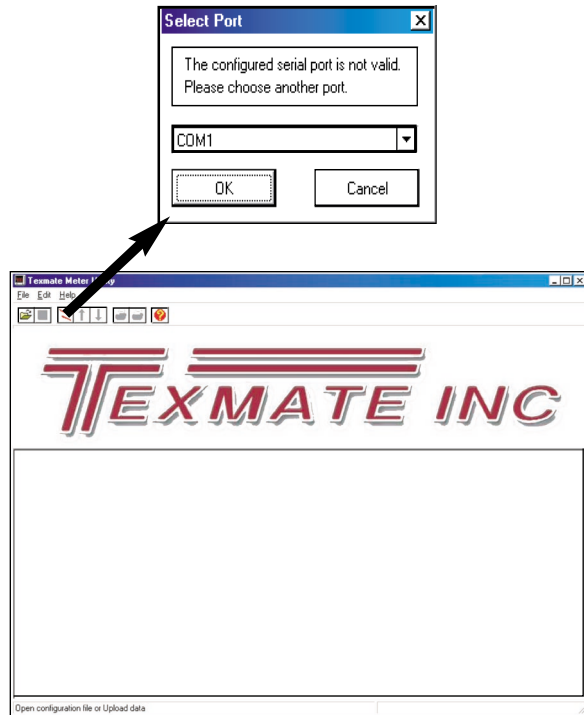
# DRAFT

## INSTRUCTIONS FOR USING THE TIGER PROGRAM SOFTWARE

Connect the serial output of the Tiger meter to be programmed to a serial port of the computer. Launch the software. The opening screen is displayed. The CONNECT / DISCONNECT button is red, indicating that the software has not connected to the meter.

Click on the CONNECT / DISCONNECT button. The select Port window pops up.

Select the Serial Port to which the meter has been connected and click OK. The CONNECT / DISCONNECT button turns Green indicating connection to the meter.



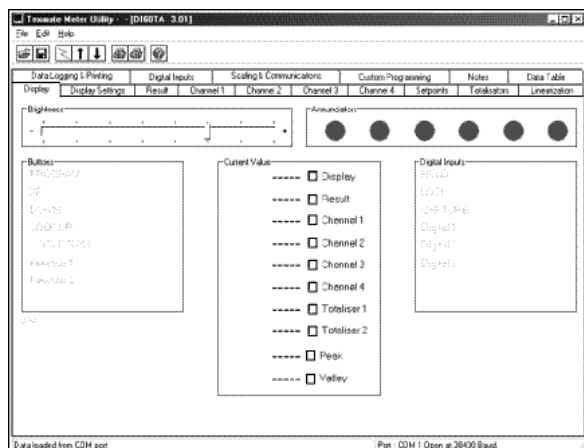
Data is uploaded from the meter and the display window appears.

In this window, you can:

- \* Adjust the brightness of the display by moving the brightness slider.
- \* See status of annunciator LEDs.
- \* Click on the Check Box to view the present display, result, CH1, CH2, CH3, CH4, Totalizer 1, Totalizer 2, Peak and Valley.

If you leave this window and then return

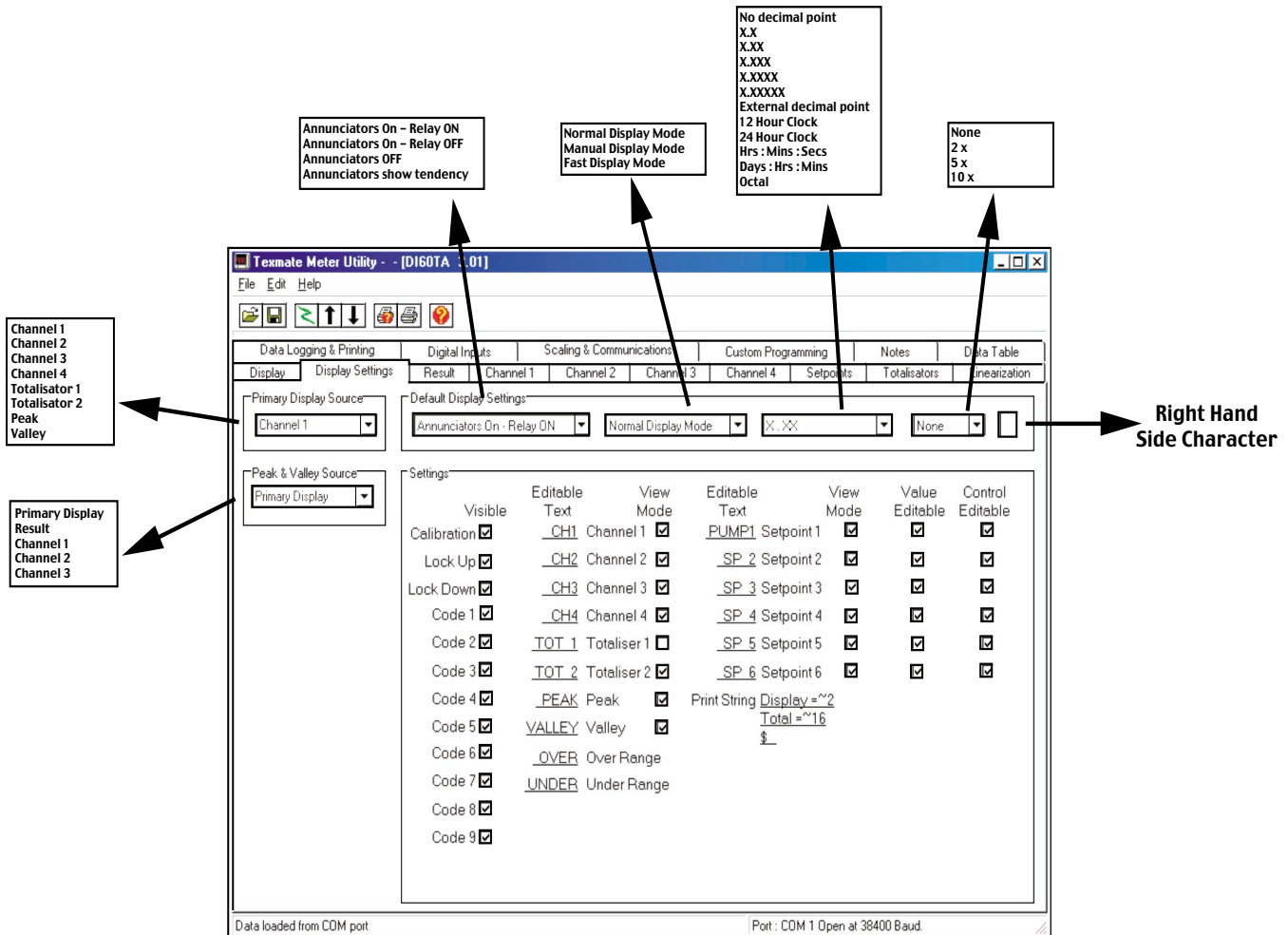
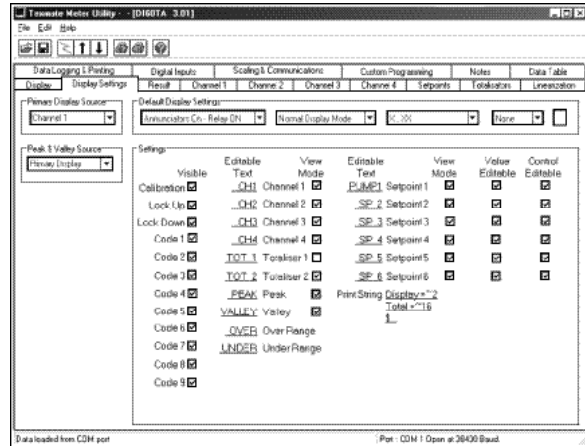
- \* The status of the front panel buttons and the Auxiliary function inputs will also be displayed. Any button that is pressed, or auxiliary function input that is active will be bold.



# DRAFT

Click the Display Settings tab. The Display Settings window will open up. In this window using the drop down boxes you can select:

- Source for the primary display.
- Source for the Peak and Valley.
- When Annunciator LEDs are ON.
- Display mode for default display.
- Decimal point for default display.
- Display rounding for default display.
- Set the print text string.
- Make menu functions to be visible  or invisible  by clicking in the check boxes beside the functions.
- Change text characters for underlined functions by double clicking the text, entering the new text and then press return.

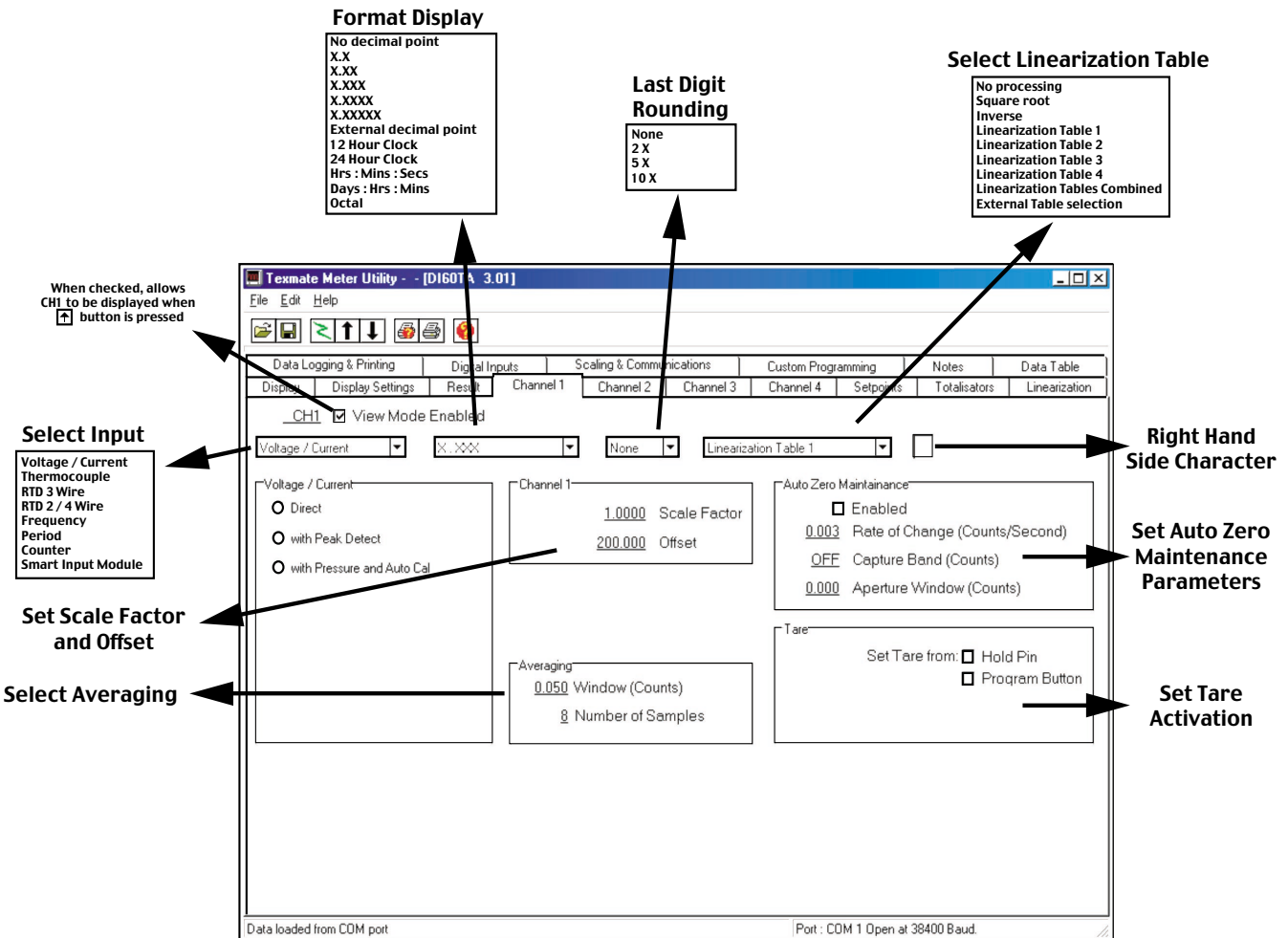
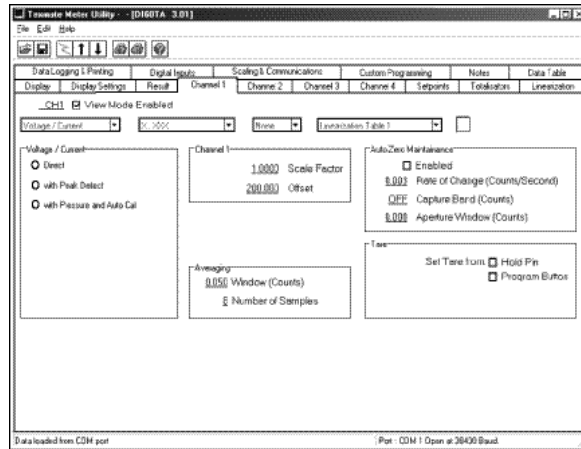


# DRAFT

## CH1 SETUP WINDOW

In this window you can setup the following functions for CH 1:

- Type of Input signal to be measured
- Decimal Point select
- Rounding of last digit
- Linearisation Table select (1 to 4)
- Manual Scale Factor adjust
- Manual Offset adjust
- Auto Zero Maintenance
- Averaging window and samples
- Set Tare

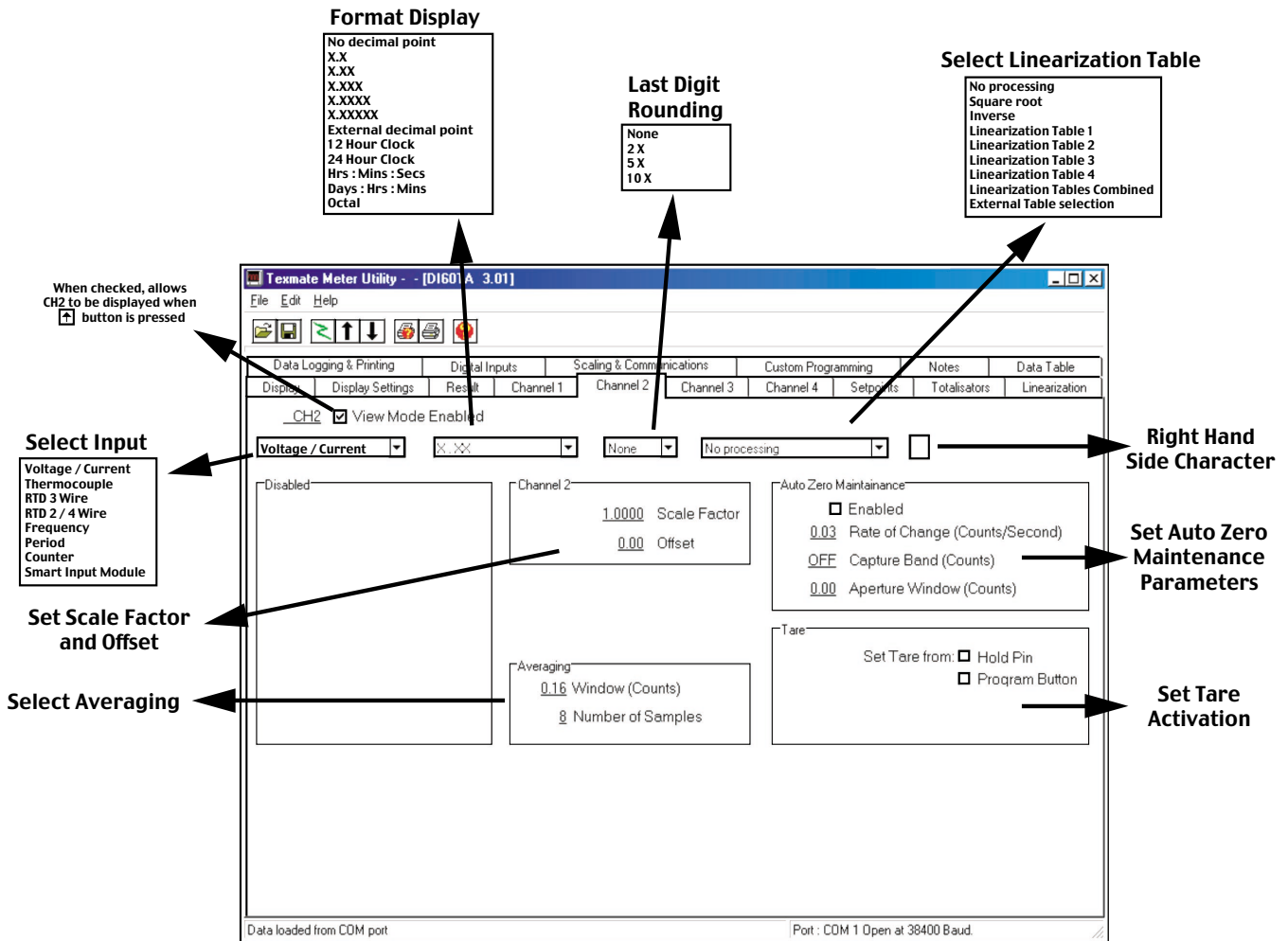
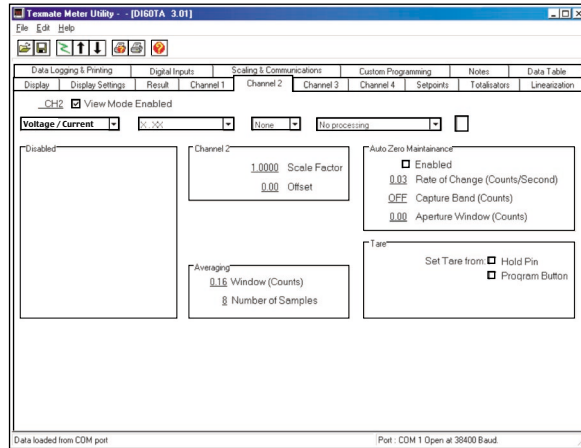


# DRAFT

## CH2 SETUP WINDOW

Similar to CH1, In this window you can setup the following functions for CH 2:

- Type of Input signal to be measured
- Decimal Point select
- Rounding of last digit
- Linearisation Table select (1 to 4)
- Manual Scale Factor adjust
- Manual Offset adjust
- Auto Zero Maintenance
- Averaging window and samples
- Set Tare

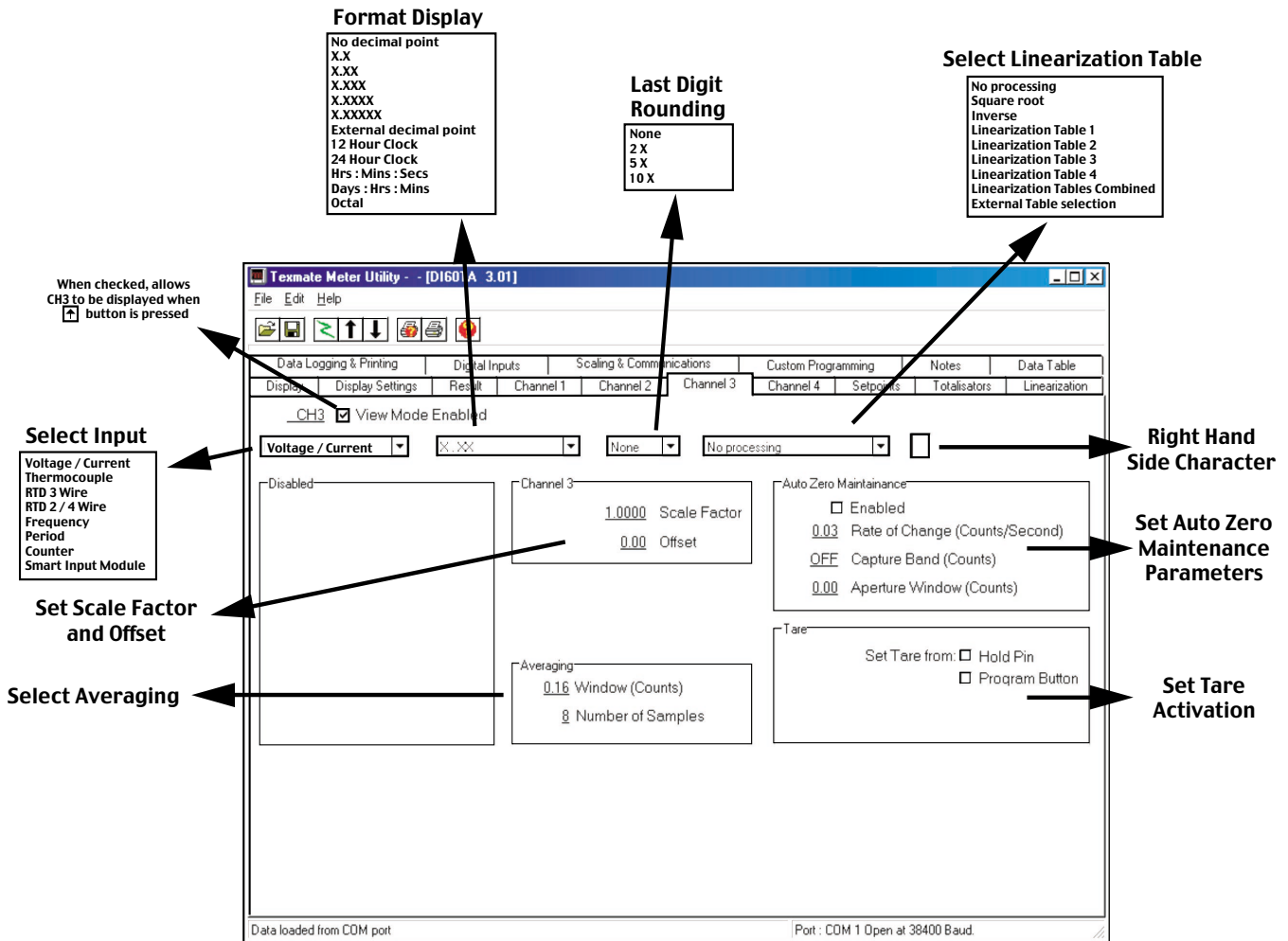
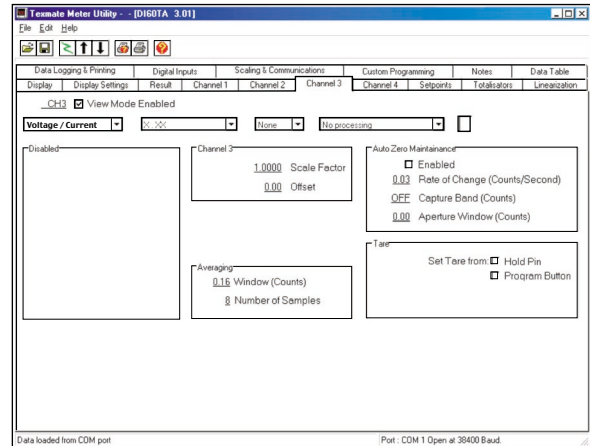


# DRAFT

## CH3 SETUP WINDOW

Similar to CH1, in this window you can setup the following functions for CH 3:

- Type of Input signal to be measured
- Decimal Point select
- Rounding of last digit
- Linearisation Table select (1 to 4)
- Manual Scale Factor adjust
- Manual Offset adjust
- Auto Zero Maintenance
- Averaging window and samples
- Set Tare

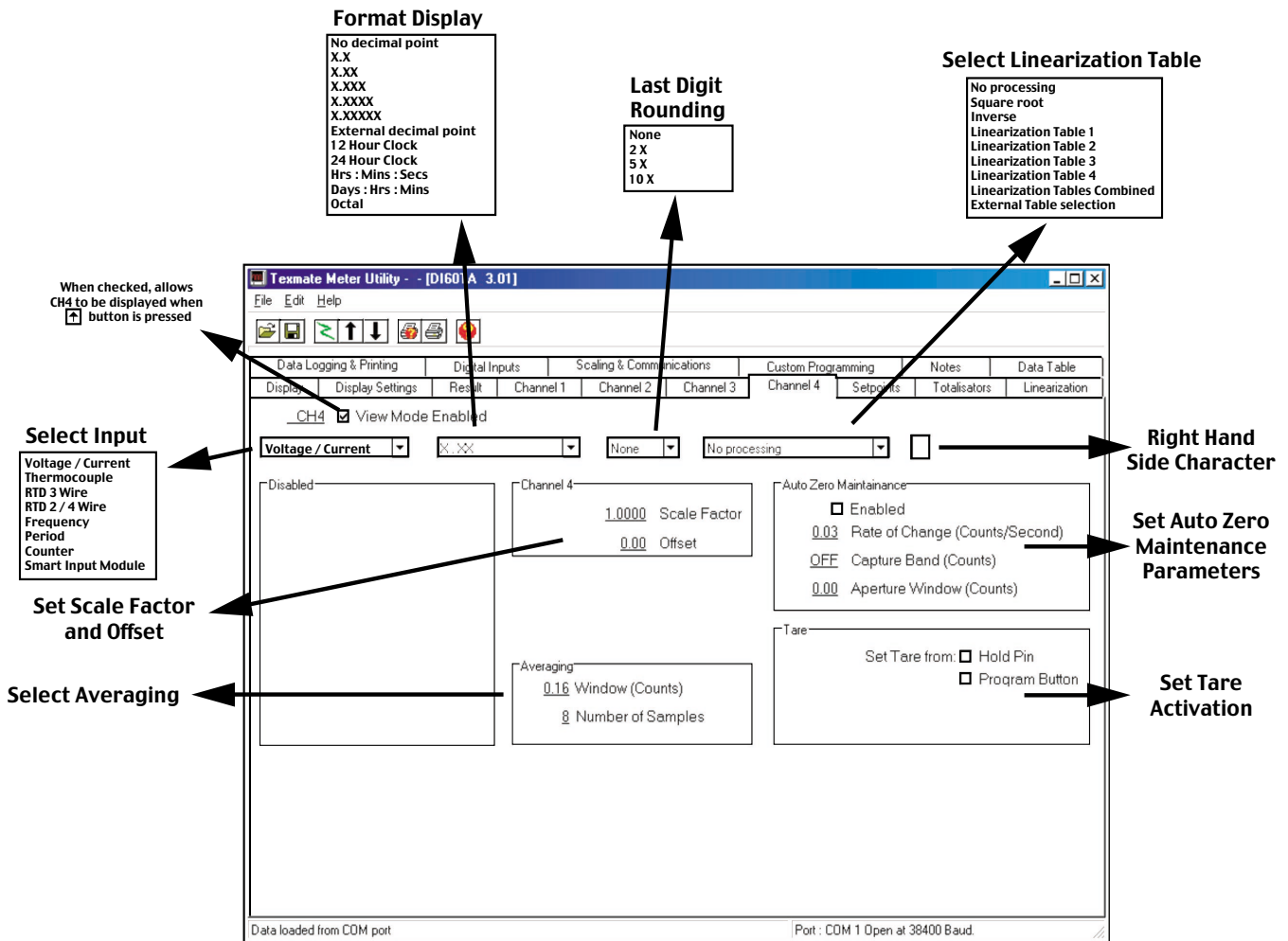
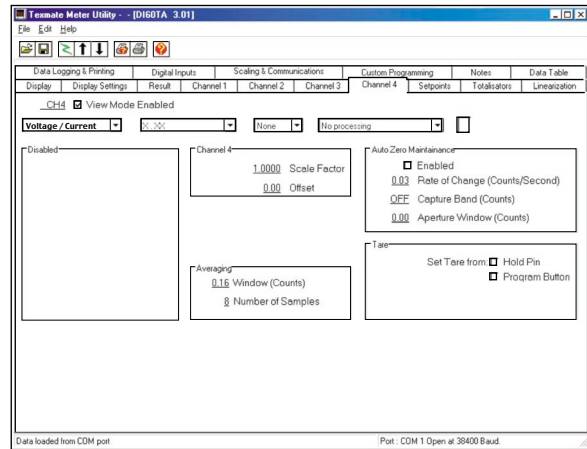


# DRAFT

## CH4 SETUP WINDOW

Similar to CH1, in this window you can setup the following functions for CH 4:

- Type of Input signal to be measured
- Decimal Point select
- Rounding of last digit
- Linearisation Table select (1 to 4)
- Manual Scale Factor adjust
- Manual Offset adjust
- Auto Zero Maintenance
- Averaging window and samples
- Set Tare

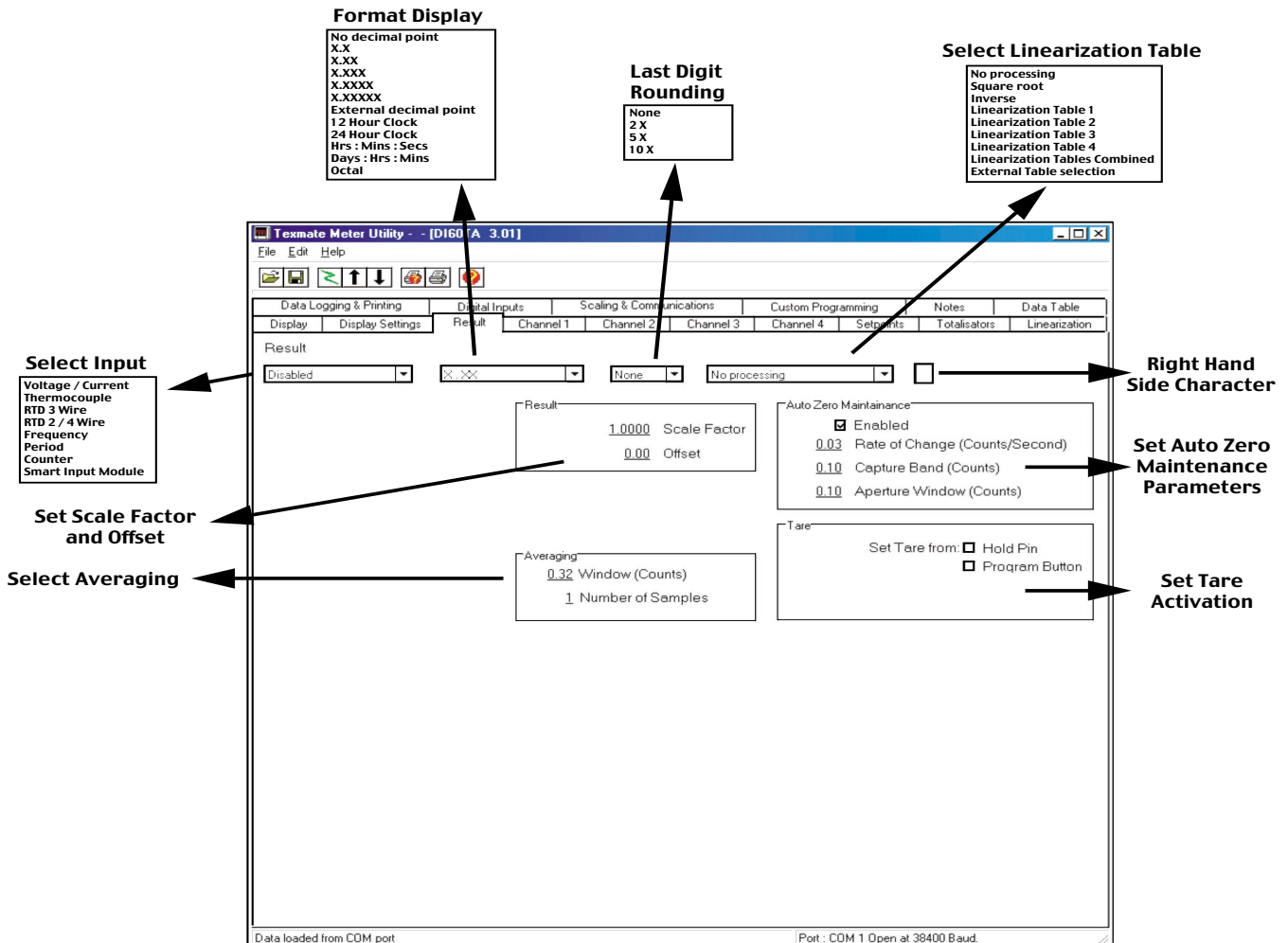
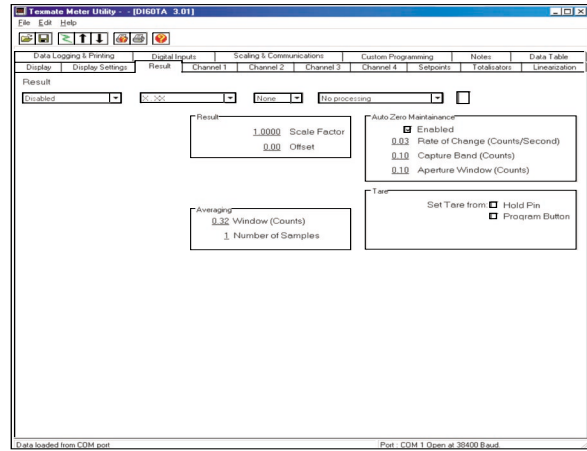


# DRAFT

## RESULT SETUP WINDOW

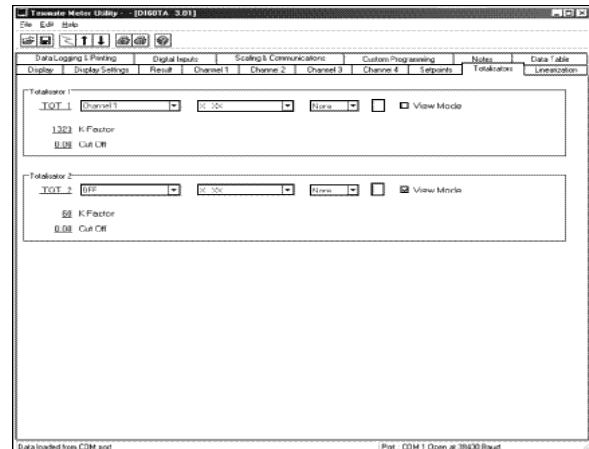
Similar to CH1, in this window you can setup the following functions for RESULT:

- Math function for RESULT
- Decimal Point select
- Rounding of last digit
- Linearisation Table select (1 to 4)
- Manual Scale Factor adjust
- Manual Offset adjust
- Auto Zero Maintenance
- Averaging window and samples
- Set Tare



## Totalisator window allows you to set:

- Source for Totalisator
- Decimal point
- Rounding
- Cut off for input
- K factor, which can be calculated ordirectly entered



K factor can be calculated by double clicking on the underlined K factor.

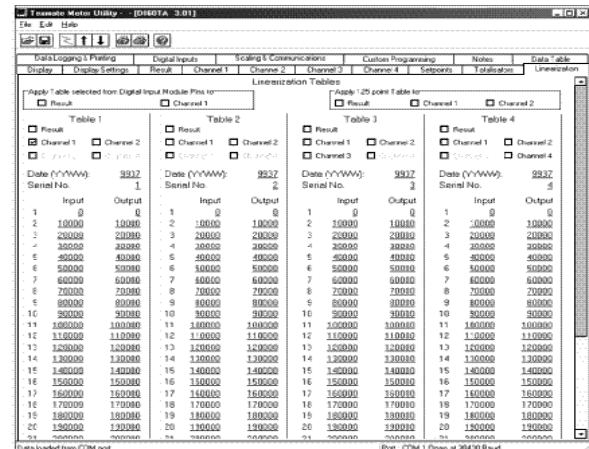
Enter the input and totalising requirements and the appropriate K factor will be calculated and entered in the previous window.



## LINEARISATION WINDOW

In this window you can:

- Set the function to which the LIN table is to be applied.
- Enter values for LIN table
- Modify values for LIN table
- Concatenate all 4 LIN tables
- Load previously saved LIN tables
- Save existing LIN tables
- Set Date for LIN table
- Set Serial Number for LIN Table



## DATA LOGGING & PRINTING

In this window you can set:

- Which parameters are to be logged
- Trigger for starting Data logging
- Type of Data logging buffer
- Date and time format on log
- Format of data log
- Upload logged data from meter
- Reset logged data
- Print text string

