

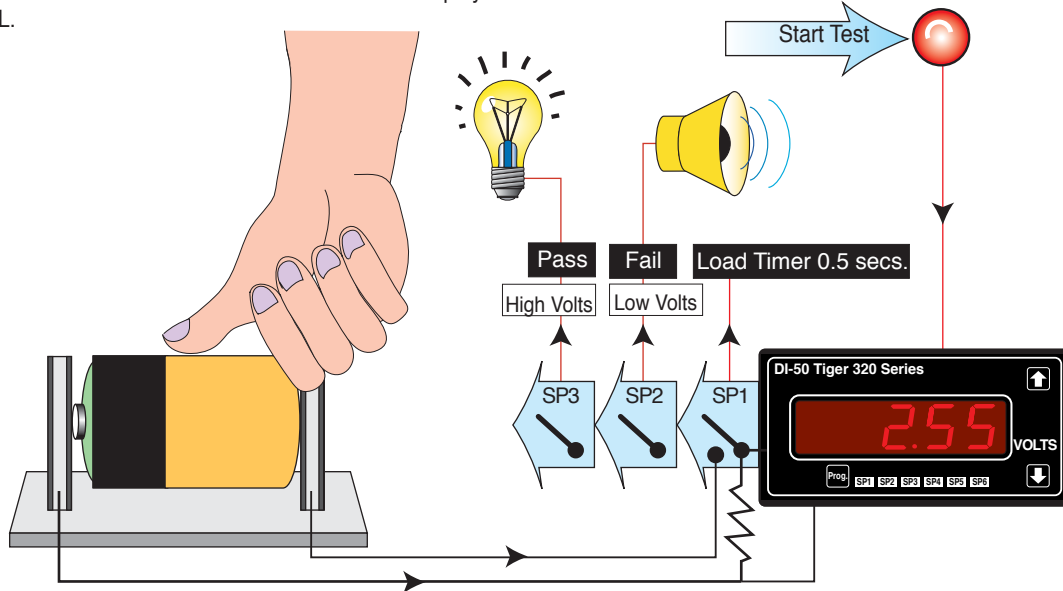
As a programmable meter controller (PMC), the Tiger 320 Series is adaptable to one-off final assembly and quality control test jigs. The modular design of the PMC and the vast choice of input signal conditioning modules, allows production engineers to overcome many quality control challenges.

The following battery and the lamp tests are basic examples of how the PMC can be designed into the production process.

TEST RIGS FOR QUALITY CONTROL APPLICATIONS

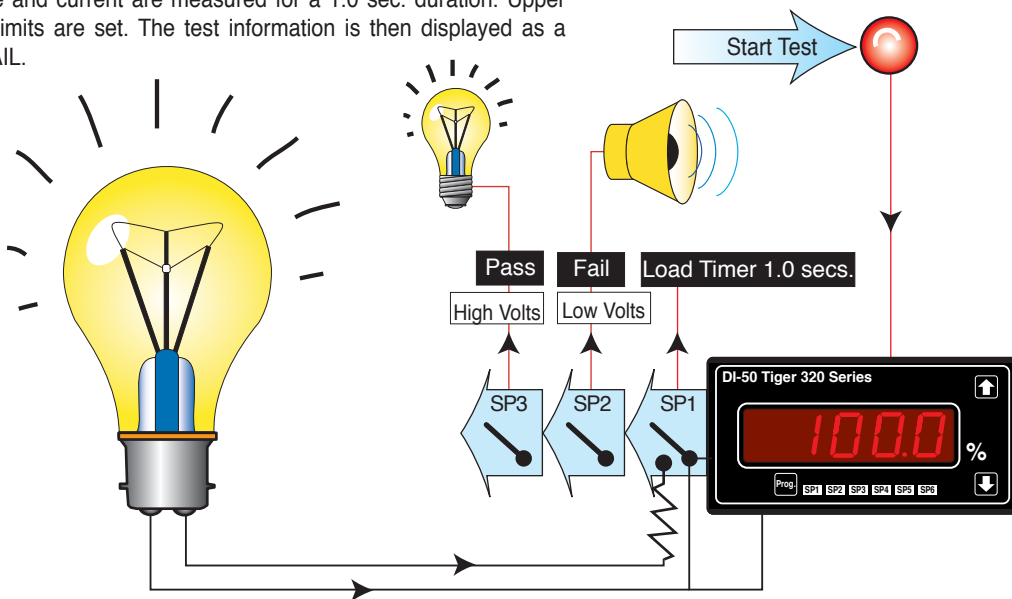
BATTERY TEST

Our customer requires to test batteries for output under load. A Tiger 320 Series controller is programmed to measure the volt drop across a load for 0.5 seconds. The test information is then displayed as a PASS or FAIL.



LIGHT BULB TEST

Our customer quality tests automotive lamps for wattage output. The voltage and current are measured for a 1.0 sec. duration. Upper and lower limits are set. The test information is then displayed as a PASS or FAIL.



APPLICATION FUNCTIONS

RELAY OUTPUTS

TIMERS

SEQUENCE CONTROLS

TEXT MESSAGING

INPUTS

DUAL DCV / MV

VOLTS AC / DC

WATTS AC / DC

Suggested Ordering Code Options for This Application

| Basic Order Codes | Comments |
|--------------------------|-----------------|
| DI-60AE-DR-PS1-ID01-OR33 | Battery test. |
| DI-60AE-DR-PS1-IW02-OR33 | Light bulb test |