

SPM-083VDC

**0.01% Super Accurate
Signal Powered Meter
Measures 15.0 - 199.9 VDC**

3 1/2 Digit 0.394"(10mm) LED



GO Digital !!

General Features

The Texmate SPM-083VDC is an signal powered LED digital panel meter. It is ideal for OEM's in the process, medical and scientific instrument field where small size and exceptional performance are important.

The SPM-083VD comes standard to measure voltage 15.0 to 1999 VDC. This meter is suitable to use on small to large DC powersupply generators, battery chargers, UPS or any other DC systems.

Pin Connections

The SPM-083VDC is factory calibrated to 15.0 -199.9 VDC.

To connect the meter to the user's system, two wires are required. Connect the wire to the pin marked "+" and "-".



Specifications

A/D conversion: CMOS dual slope with automatic zero compensation

Display:..... 0.394" (10mm), Red, optional Green or Blue LEDs.

Power Consumption: 10mA Max.

Accuracy: 0.01% of reading.

Connection:..... Meter is supplied with 2-pin screw terminal type connector.

Settling Time:..... 1 sec.

Reading Rate: 2.5 per sec.

Over Range Indication: last 3 digits blanking

Common Mode Rejection Ratio: Approx. 86 dB

Power Supply: No separate power supply is required. The meter is powered from the signal input 15V to 200V

Operating Temperature: . -20 to 80 °C. Typical max 50ppm for 75%.

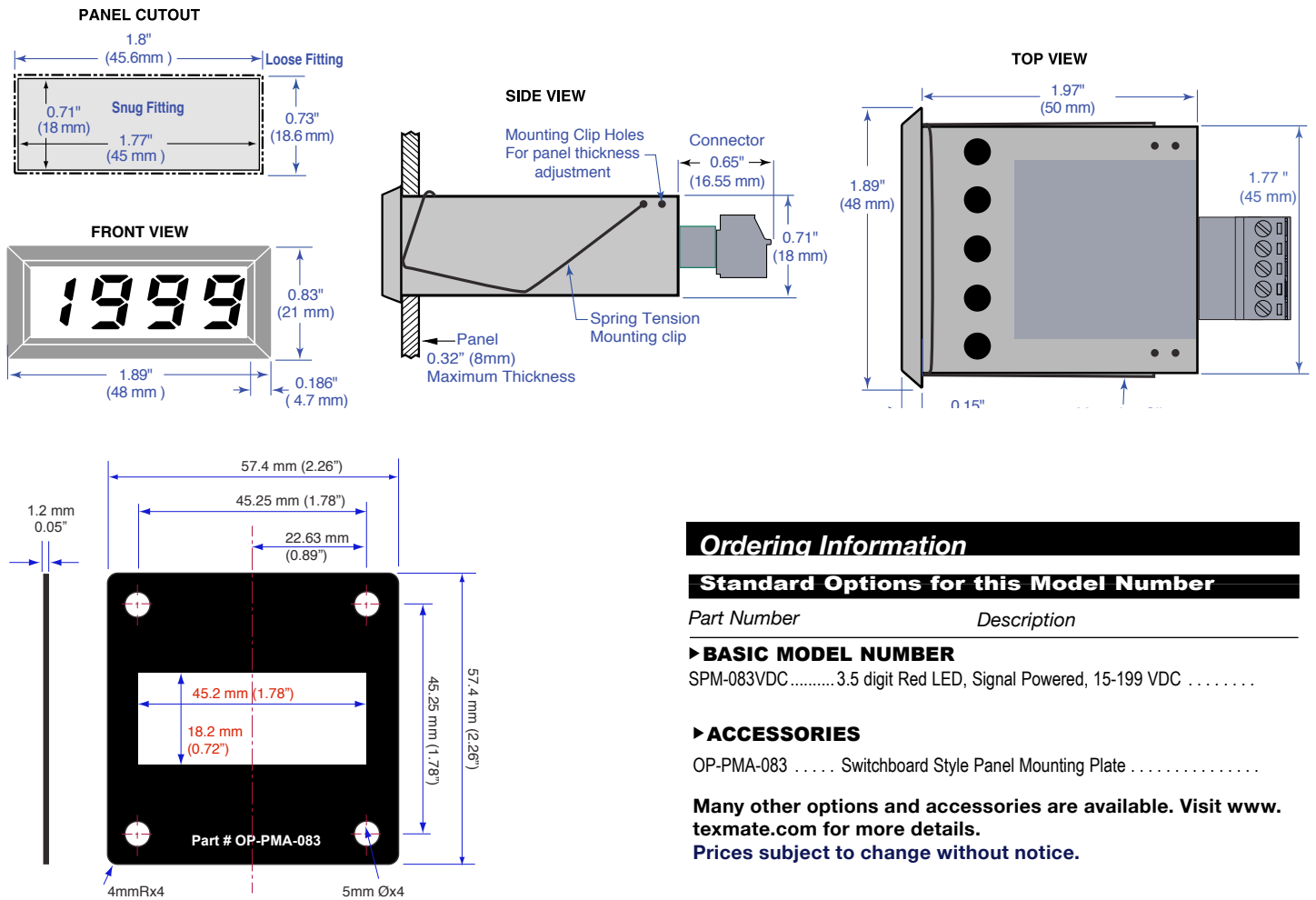
Temperature Coefficient: Better than ± 50 ppm/ °C (typical 15 ppm for 80%)

Relative Humidity: 95% (non-condensing)

Case Dimensions: 1.77"Wx0.71"Hx1.97"D (45x18x50mm)
Add 0.65" (16.55 mm) for connector
Front Bezel 1.89"x0.83" (48x21mm)
Panel cutout 1.77"x0.71" (45x18mm)

Max Panel Thickness: 0.32" (8mm)

SPM-083 Case Dimensions and Panel Cutouts



Ordering Information

Standard Options for this Model Number

Part Number	Description
► BASIC MODEL NUMBER	
SPM-083VDC 3.5 digit Red LED, Signal Powered, 15-199 VDC

► ACCESSORIES

OP-PMA-083 Switchboard Style Panel Mounting Plate

Many other options and accessories are available. Visit www.texmate.com for more details.
 Prices subject to change without notice.

MINI Series, mini size and mighty performance

SPM-083VDC 3.5 digit Red LED, Loop Powered, 4-20mA input (1000)

WARRANTY

Texmate warrants that its products are free from defects in material and workmanship under normal use and service for a period of one year from date of shipment. Texmate's obligations under this warranty are limited to replacement or repair, at its option, at its factory, of any of the products which shall, within the applicable period after shipment, be returned to Texmate's facility, transportation charges pre-paid, and which are, after examination, disclosed to the satisfaction of Texmate to be thus defective. The warranty shall not apply to any equipment which shall have been repaired or altered, except by Texmate, or which shall have been subjected to misuse, negligence, or accident. In no case shall Texmate's liability exceed the original purchase price. The aforementioned provisions do not extend the original warranty period of any product which has been either repaired or replaced by Texmate.

USER'S RESPONSIBILITY

We are pleased to offer suggestions on the use of our various products either by way of printed matter or through direct contact with our sales/application engineering staff. However, since we have no control over the use of our products once they are shipped, **NO WARRANTY WHETHER OF MERCHANTABILITY, FITNESS FOR PURPOSE, OR OTHERWISE** is made beyond the repair, replacement, or refund of purchase price at the sole discretion of Texmate. Users shall determine the suitability of the product for the intended application before using, and the users assume all risk and liability whatsoever in connection therewith, regardless of any of our suggestions or statements as to application or construction. In no event shall Texmate's liability, in law or otherwise, be in excess of the purchase price of the product.

Texmate cannot assume responsibility for any circuitry described. No circuit patent or software licenses are implied. Texmate reserves the right to change circuitry, operating software, specifications, and prices without notice at any time.



1934 Kellogg Ave., Carlsbad, CA 92008
 Tel: 1-760-598-9899 • 1-800-TEXMATE
 • Email: orders@texmate.com

SPM-083VDC Technical Manual Copyright © 2019 Texmate Inc. All rights reserved. Published by: Texmate Inc. USA. Information in this Technical Manual is subject to change without notice due to correction or enhancement. The information described in this manual is proprietary to Texmate, Inc. and may not be copied, reproduced or transmitted, in whole or in part, in connection with the design, manufacture, or sale of apparatus, device or private label product without the express written consent of Texmate, Inc.