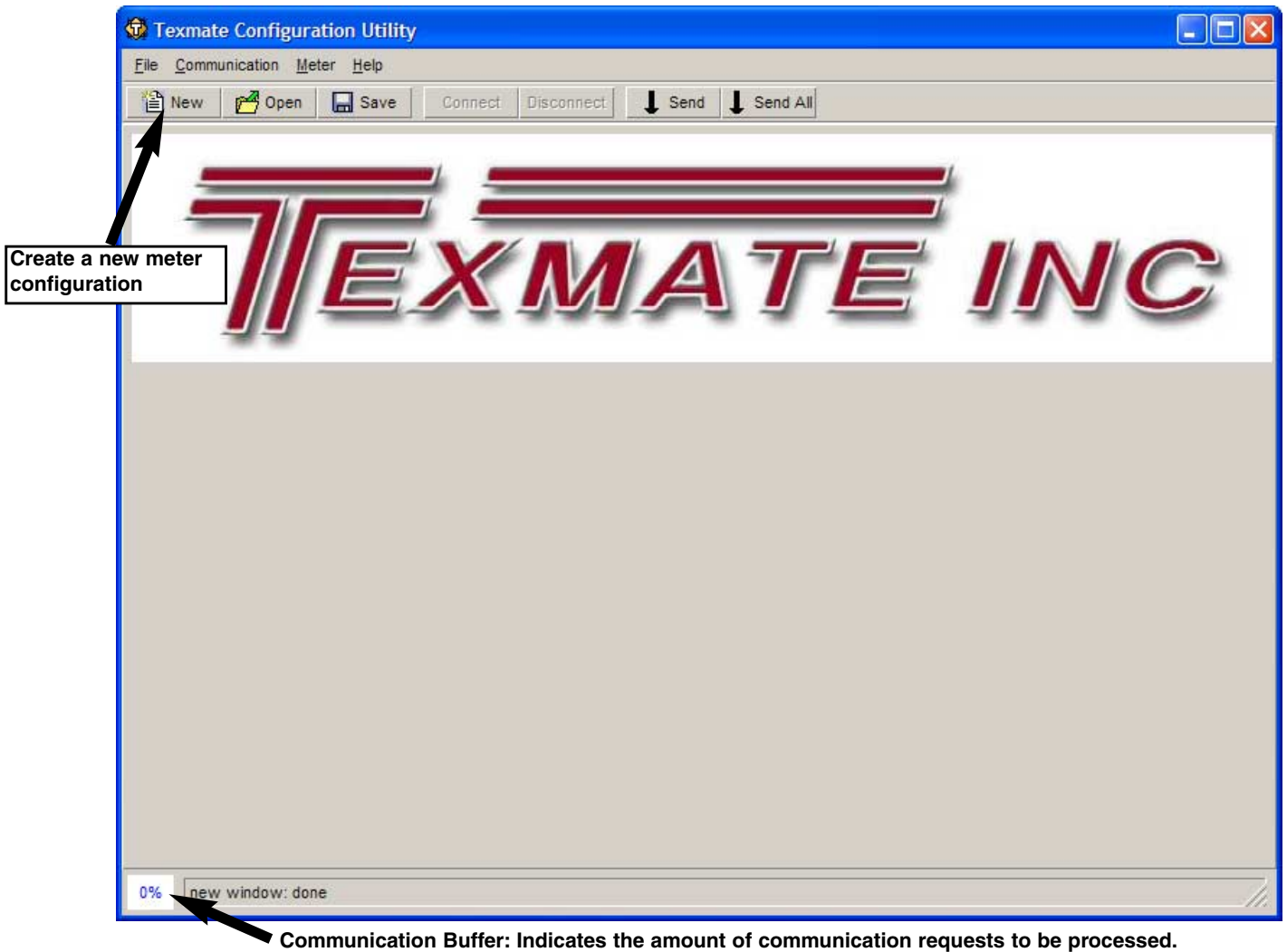


INSTRUCTIONS FOR USING THE TIGER CONFIGURATION UTILITY



File menu

New

-Create new configuration.

Open

-Opens a configuration.

Import

-Add (partial) configuration file (i.e. compiled macro) to current configuration.

Save

-Save configuration file.

Verbose Output File

-Only recommended for debugging.

Communication menu

Connect/Disconnect

Send/Send Changes

-Send only changes to the meter.

Send All

-Send complete configuration.

Connection...

-Change communication settings to connect to a similar meter.

Meter menu

Change Meter Comm. Setting

Show Changed Registers

-Registers sent on Send/Send Changes.

Select serial or ethernet

Serial (COM-port)
TCP/IP

Select auto detection, standard or custom configuration from the list.

Automatic (always connects)
DI50T V4.00+
DI50TAN6 V4.00+
DI50TB51 V4.00+
DI503T V4.00+
DI60T V4.00+
DI60AT V4.00+
DI60XT V4.00+
DI60AT5C V4.00+
DI602AT V4.00+
DI802XAT V4.00+
FIB101D50T V4.00+
GI50T V4.00+
GI50TB101 V4.00+

LinTable
Macro only
TestSmartModule
Datalogger 4.00+
Watch 4.00+
Datalogger 3.05+
Watch 3.05+

Connect and upload only meter type information

Upload complete meter setup

Select

Do not upload macros
Upload only existing macro
Upload complete macro area

New Meter

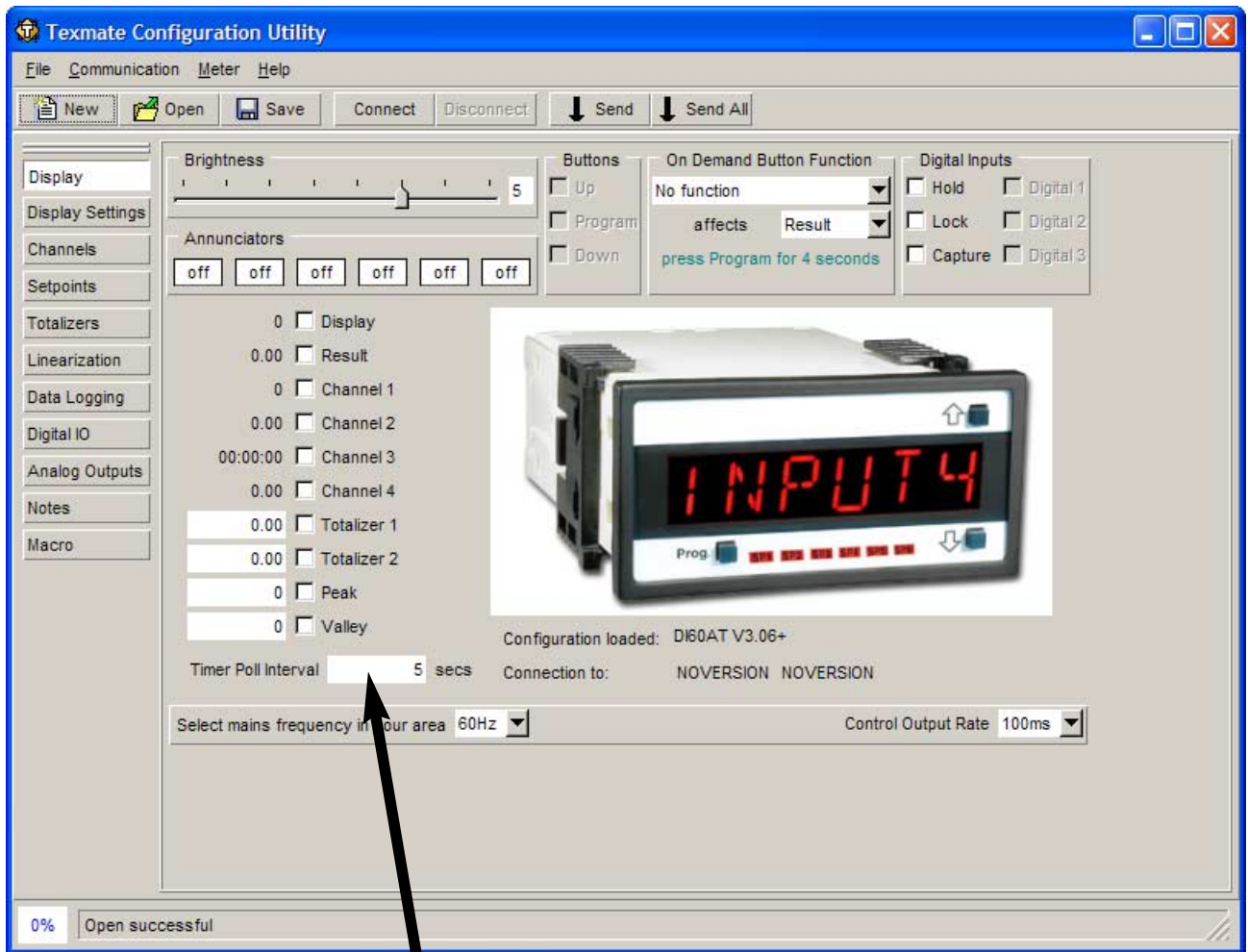
Choose Meter Type:
Automatic (always connects)

Choose Communication:
Serial (COM-port)

Choose Parameters:
Device: com5
Baudrate: 9600
Parity: None

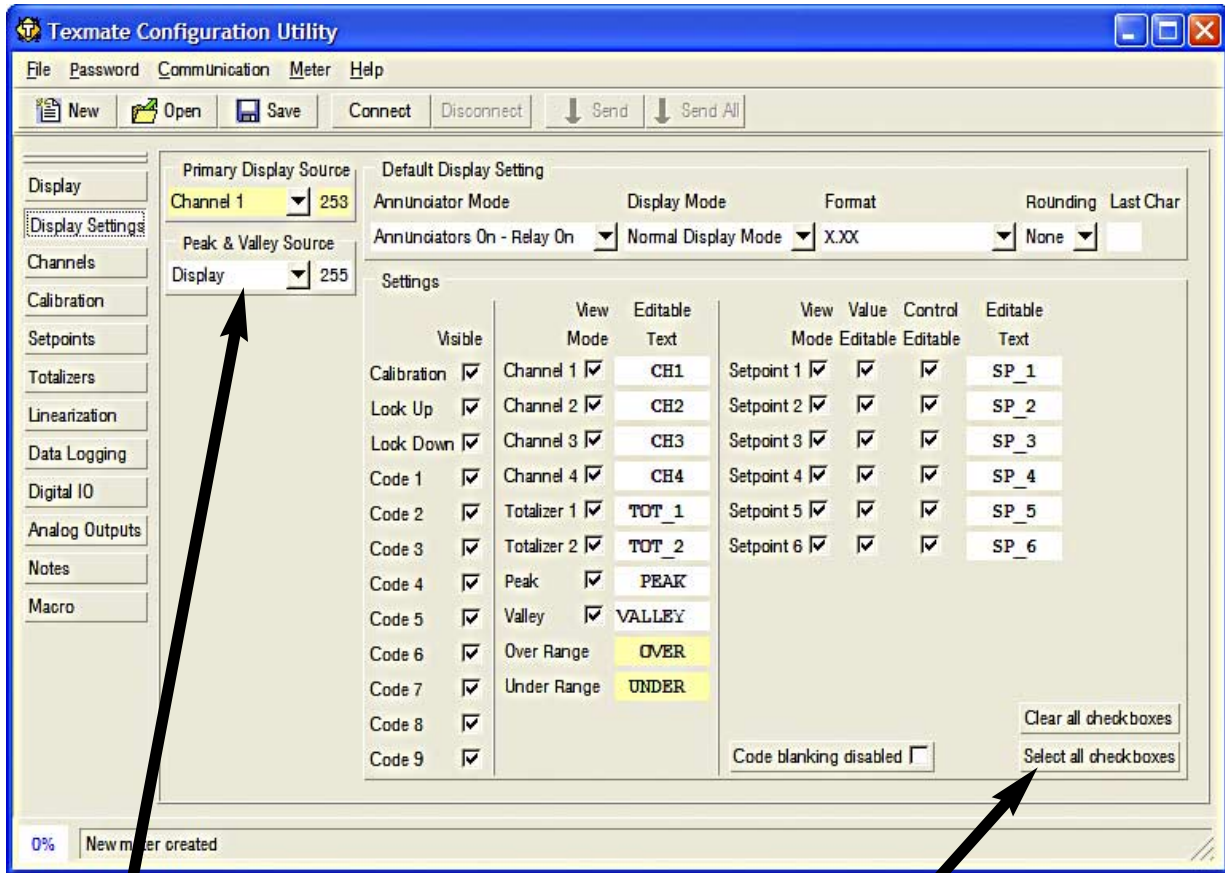
Connection Settings:
Meter ID: 1
 Connect now
 Upload now
Do not upload macros

OK Cancel



Adjust poll interval for registers checked above.

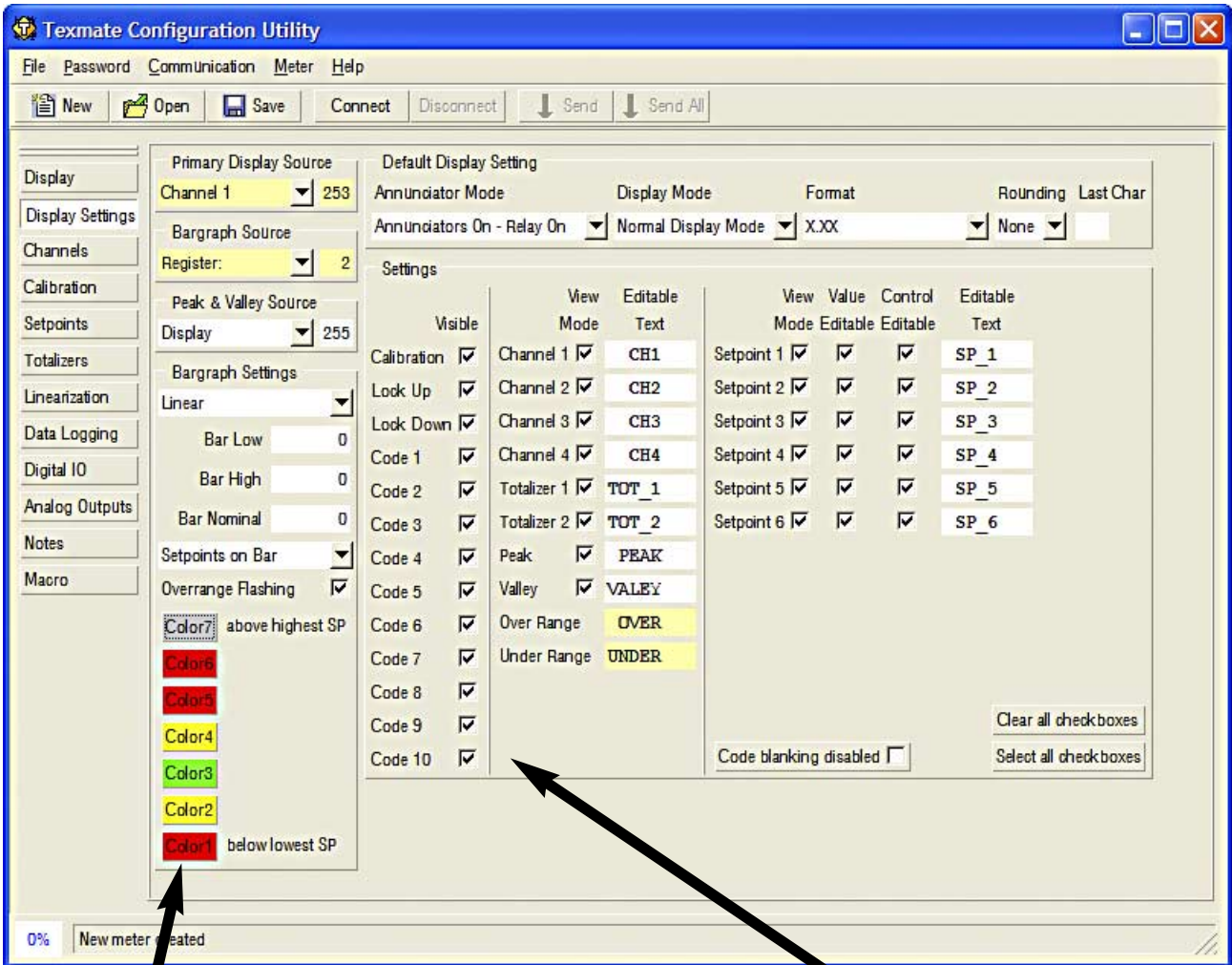
Display Settings for DI-60AT V3.06+



Register Selector: Select register by name in the list box or enter register number directly.

Clear/Select all checkboxes in this settings panel.

Display Settings for FI-B101D50T V3.06+



Click on the color button to change the bar color (green, red, yellow, off) below lowest SP, between lowest and second lowest setpoint,, above highest setpoint.

Code 10 is only available on bargraph meters.

Texmate Configuration Utility

File Communication Meter Help

New Open Save Connect Disconnect Send Send All

Result	Text	Measurement	Type	Scale factor	Offset
Channel 1	CH1	Voltage, Current	No function	1	0
Channel 2	CH2	Voltage, Current	No post processing	1	0.00
Channel 3	CH3	Real Time Clock / Timer	HH:MM:SS	1	00:00:00
Channel 4	CH4	No Function		1	0.00

Result	Format	Rounding	Postprocessing	Linearization	Last Char
Channel 1	No decimal point	None	No processing	No Linearization	
Channel 2	X.XX	None	set in Type	No Linearization	
Channel 3	Hrs : Mins : Secs	None	No processing	set in Postprocessing	
Channel 4	X.XX	None	No processing	set in Postprocessing	

Result	Window (Counts)	Number of Samples	Capture Band (sec)	Rate of Change (Counts/sec)	Aperture Window (Counts)
Channel 1	0.16	8	Auto	30	3
Channel 2	0.16	8	Manual	255	0.00
Channel 3	00:00:00	8	Off	0	00:00:03
Channel 4	0.16	8	Off	0	0.03

(Auto) Zero Maintenance (manual trigger is capture pin)

Enable Update	Value
<input type="checkbox"/>	0.00 Result
<input type="checkbox"/>	0 Channel 1
<input type="checkbox"/>	0.00 Channel 2
<input type="checkbox"/>	00:00:00 Channel 3
<input type="checkbox"/>	0.00 Channel 4

0% Open successful

Capture band between 1-254 ⇔ Auto

Texmate Configuration Utility

File Communication Meter Help

New Open Save Connect Disconnect Send Send All

Display

Display Settings

Channels

Setpoints

Totalizers

Linearization

Data Logging

Digital IO

Analog Outputs

Notes

Macro

Name	Source	Source Register	Value	Relay	Activation		
Setpoint 1	SP_1	From Register	Channel 1	253	18000	No Latching	Above
Setpoint 2	SP_2	From Register	Off	0	-180.00	No Latching	Above
Setpoint 3	SP_3	From Register	Off	0	50.00	No Latching	Above
Setpoint 4	SP_4	From Register	Off	0	-50.00	No Latching	Above
Setpoint 5	SP_5	From Register	Off	0	100.00	No Latching	Above
Setpoint 6	SP_6	Hold Pin	Off	0	-100.00	No Latching	Above

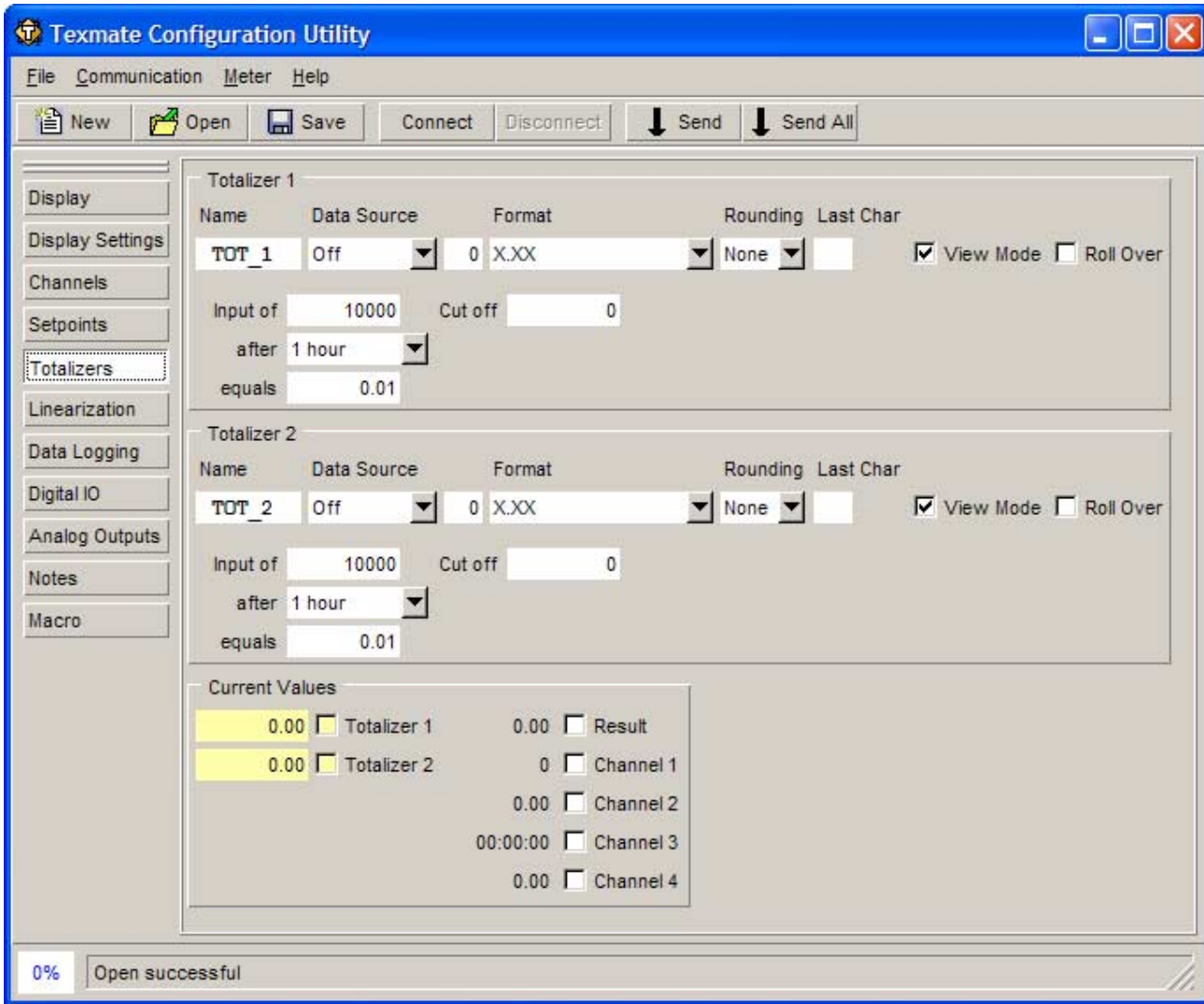
Mode	Count	Tracking	Display	Timer	Resolution	Time(s)	Time(s)
Setpoint 1	Hysteresis	10	Off	Flash	Pulse	100ms	Make Delay 0.0 Max ON Time 0.0
Setpoint 2	PID	0.00	Off	Flash	Off	100ms	Make Delay 0.0 Break Delay 0.0
Setpoint 3	Off	0.00	Setpoint 1	Flash	Off	100ms	Make Delay 0.0 Break Delay 0.0
Setpoint 4	Off	0.00	Off	Flash	Off	100ms	Make Delay 0.0 Break Delay 0.0
Setpoint 5	Off	0.00	Off	Flash	Off	100ms	Make Delay 0.0 Break Delay 0.0
Setpoint 6	Off	0.00	Off	Flash	Off	100ms	Make Delay 0.0 Break Delay 0.0

Trigger	Destination Register	Reset Mode	On Trigger	Status	
Setpoint 1	Disabled	Off	0 Constant	0	<input type="checkbox"/> Print <input type="checkbox"/> Log <input type="button" value="off"/>
Setpoint 2	Disabled	Off	0 Constant	0	<input type="checkbox"/> Print <input type="checkbox"/> Log <input type="button" value="off"/>
Setpoint 3	Disabled	Off	0 Constant	0	<input type="checkbox"/> Print <input type="checkbox"/> Log <input type="button" value="off"/>
Setpoint 4	Disabled	Off	0 Constant	0	<input type="checkbox"/> Print <input type="checkbox"/> Log <input type="button" value="off"/>
Setpoint 5	Disabled	Off	0 Constant	0	<input type="checkbox"/> Print <input type="checkbox"/> Log <input type="button" value="off"/>
Setpoint 6	Break Edge	Tare	14 Constant	0.00	<input type="checkbox"/> Print <input checked="" type="checkbox"/> Log <input type="button" value="off"/>

P.I.D. Settings

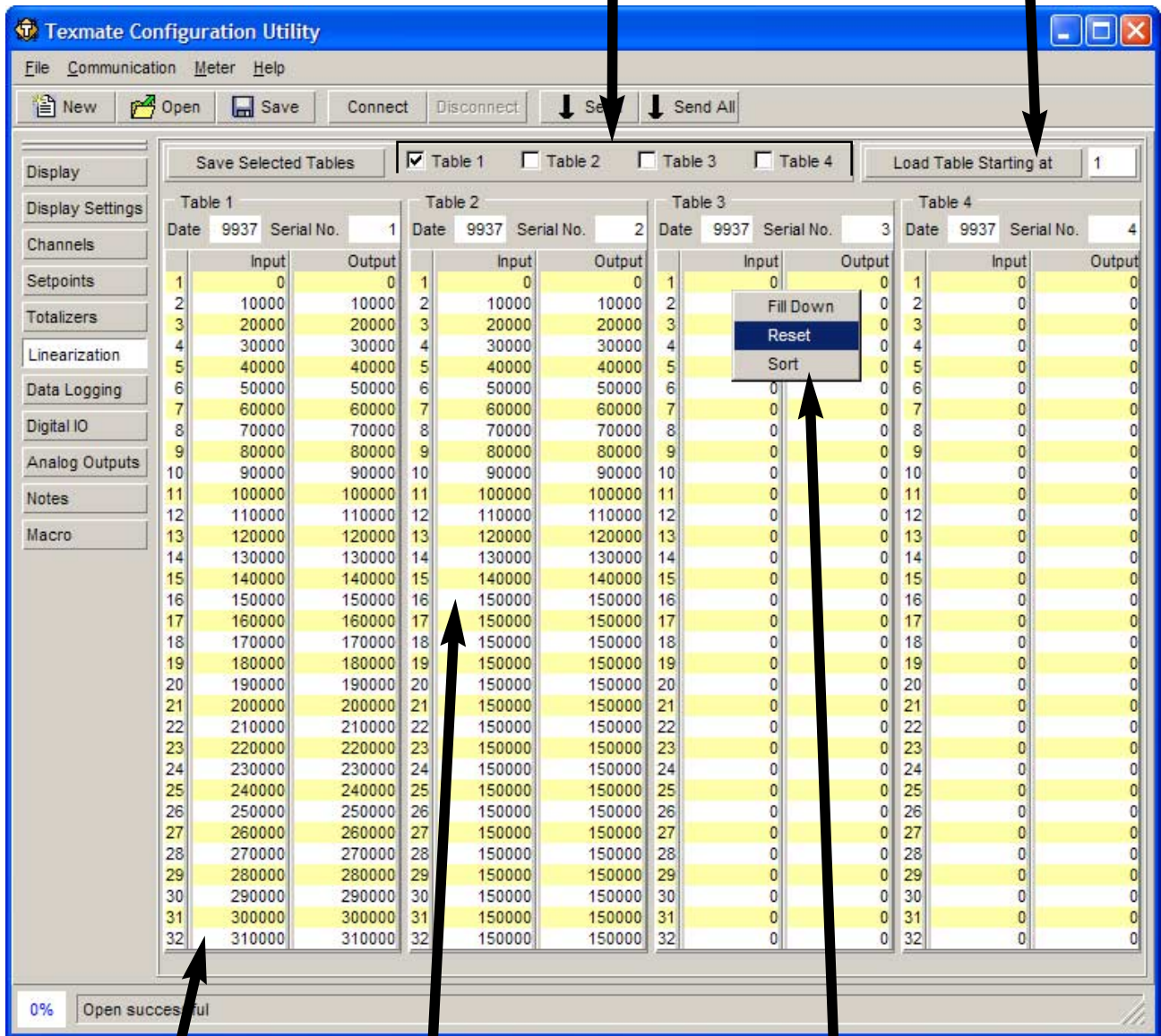
Span	Proportional	Integral	Derivative	Anti Reset Windup	Min. Cycle Time
Setpoint 1	0.0	1.0	0.0	0.0	100.0 1.0
Setpoint 2	0.0	0.0	0.0	0.0	100.0 1.0

0% Open successful



Only consecutive tables
(i.e. 1-3, 2-4) can be saved.

Load tables from file and enter
them consecutively starting at
this table number.



Reset

Fill Down

Right-click menu:

Fill Down

-Use the values of the current line for the rest of the table.

Reset

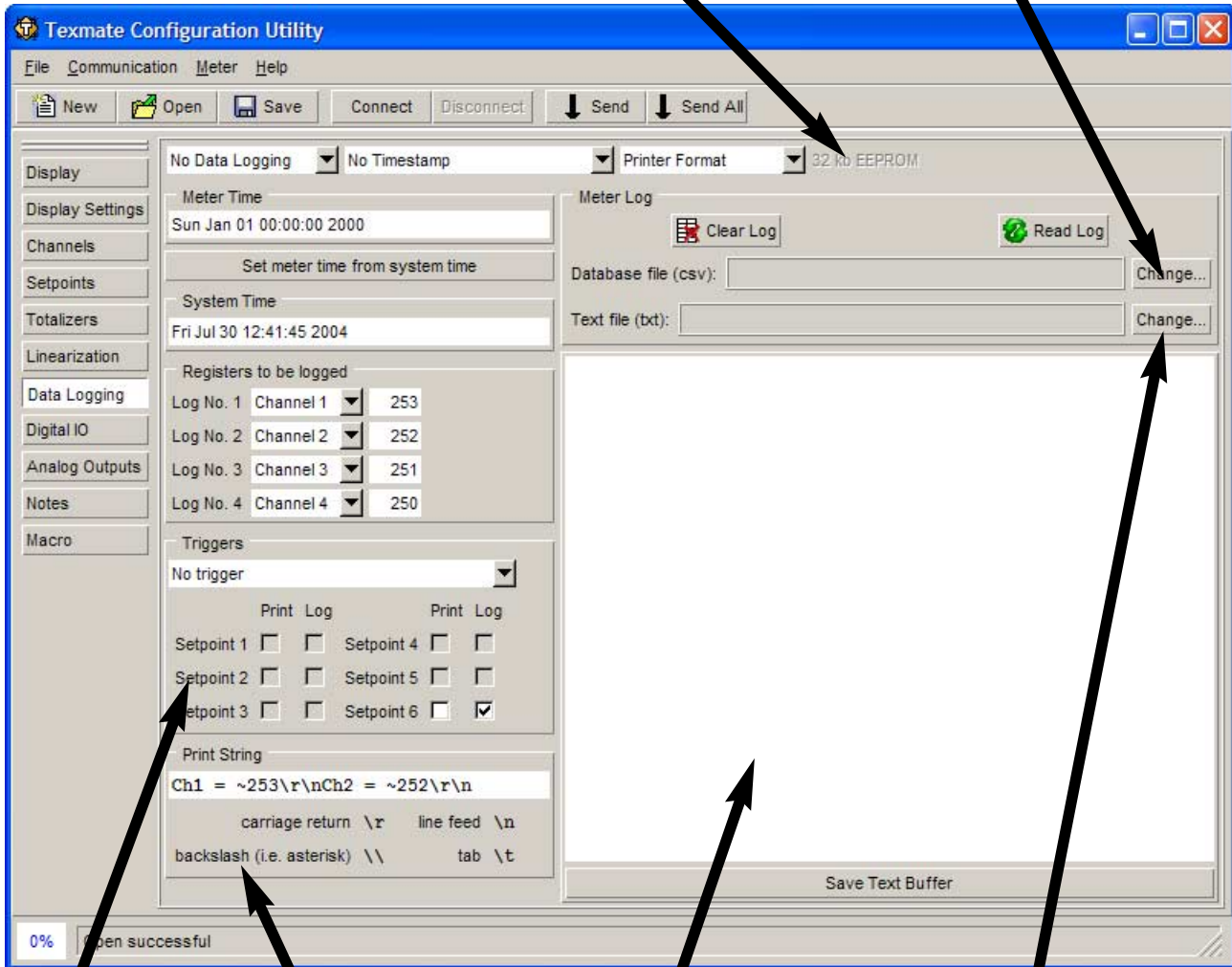
-Return current table to factory default.

Sort

-Sort current table in ascending order (tables have to be sorted to work properly).

Memory size for data logging.

Save log data in CSV format on Read Log.

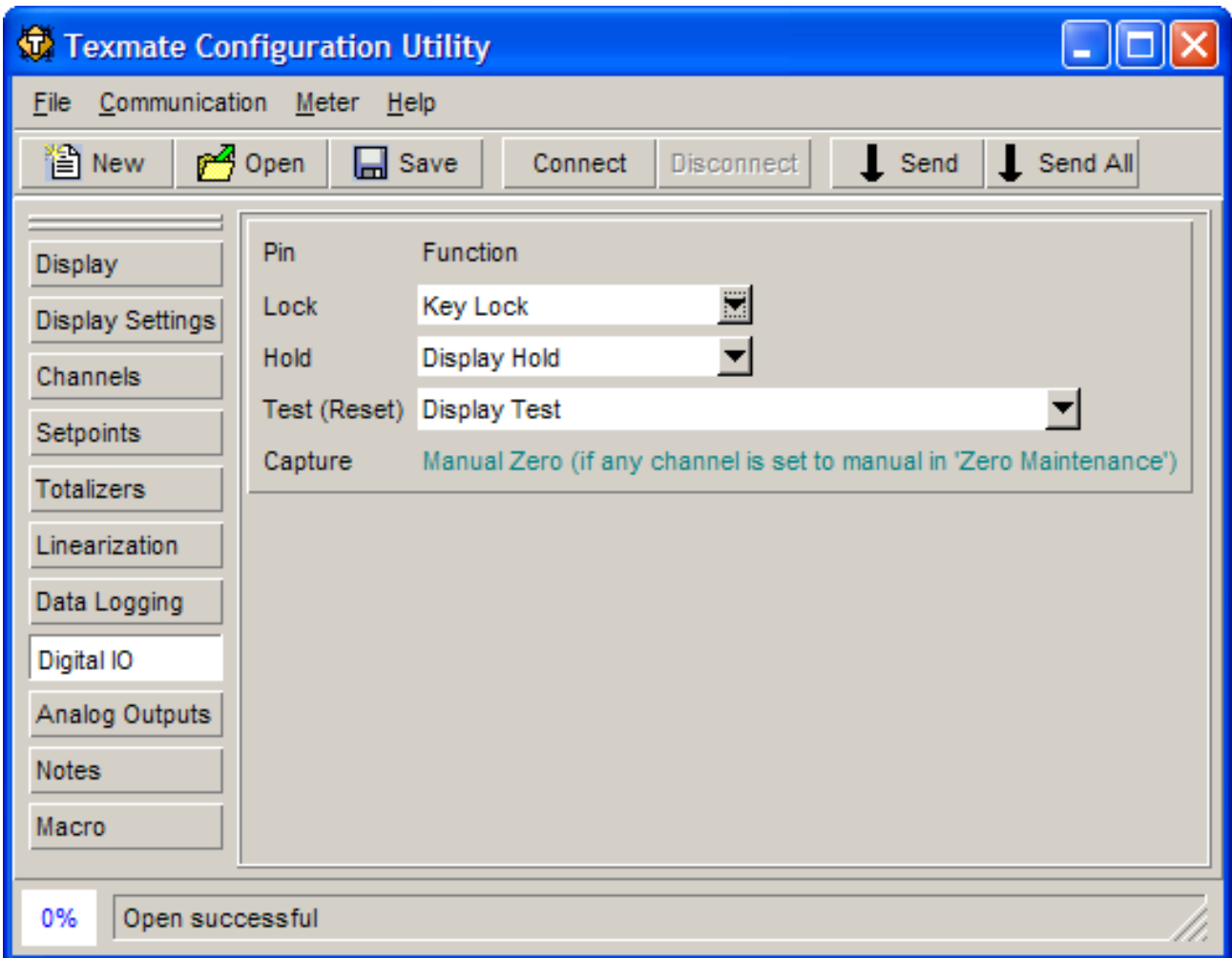


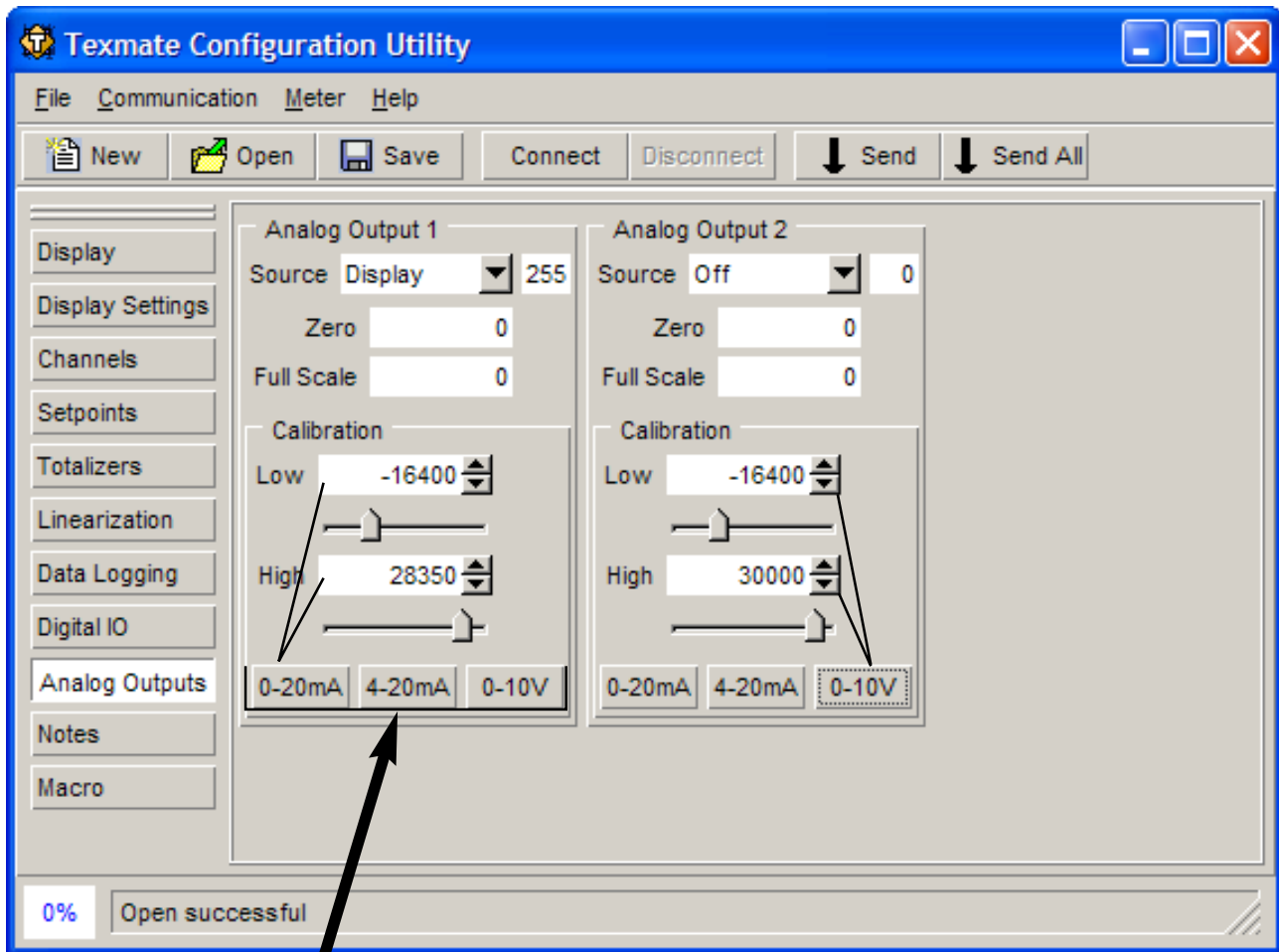
Only available if setpoint is set up as a trigger on Setpoints page.

Available escape codes: \a, \b, \f, \n, \r, \t, \v, or \OxHH where H is a hexadecimal digit.

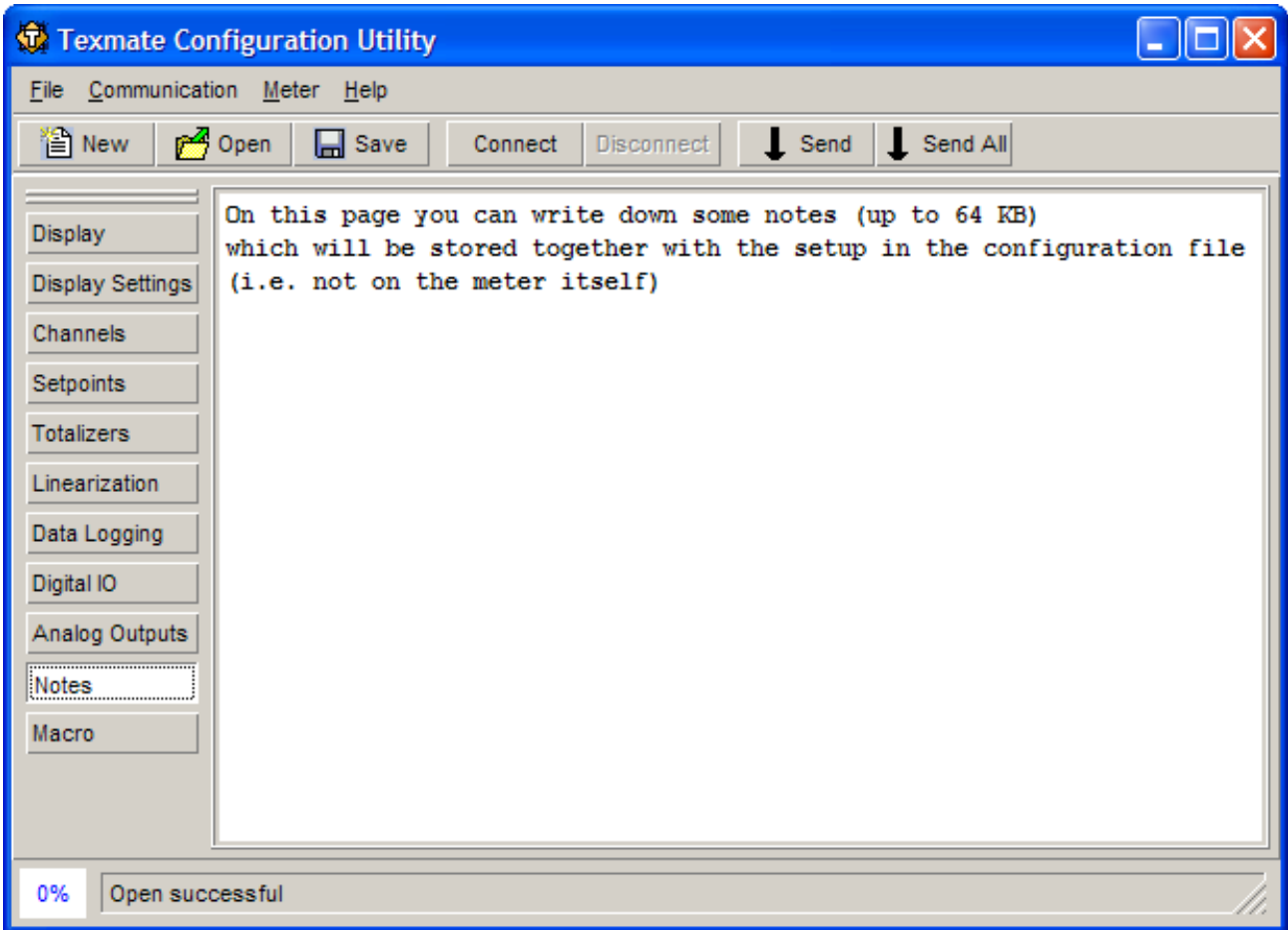
Text buffer will only show up to 64KB of data.

Save log data as it is sent from the meter on Read Log.

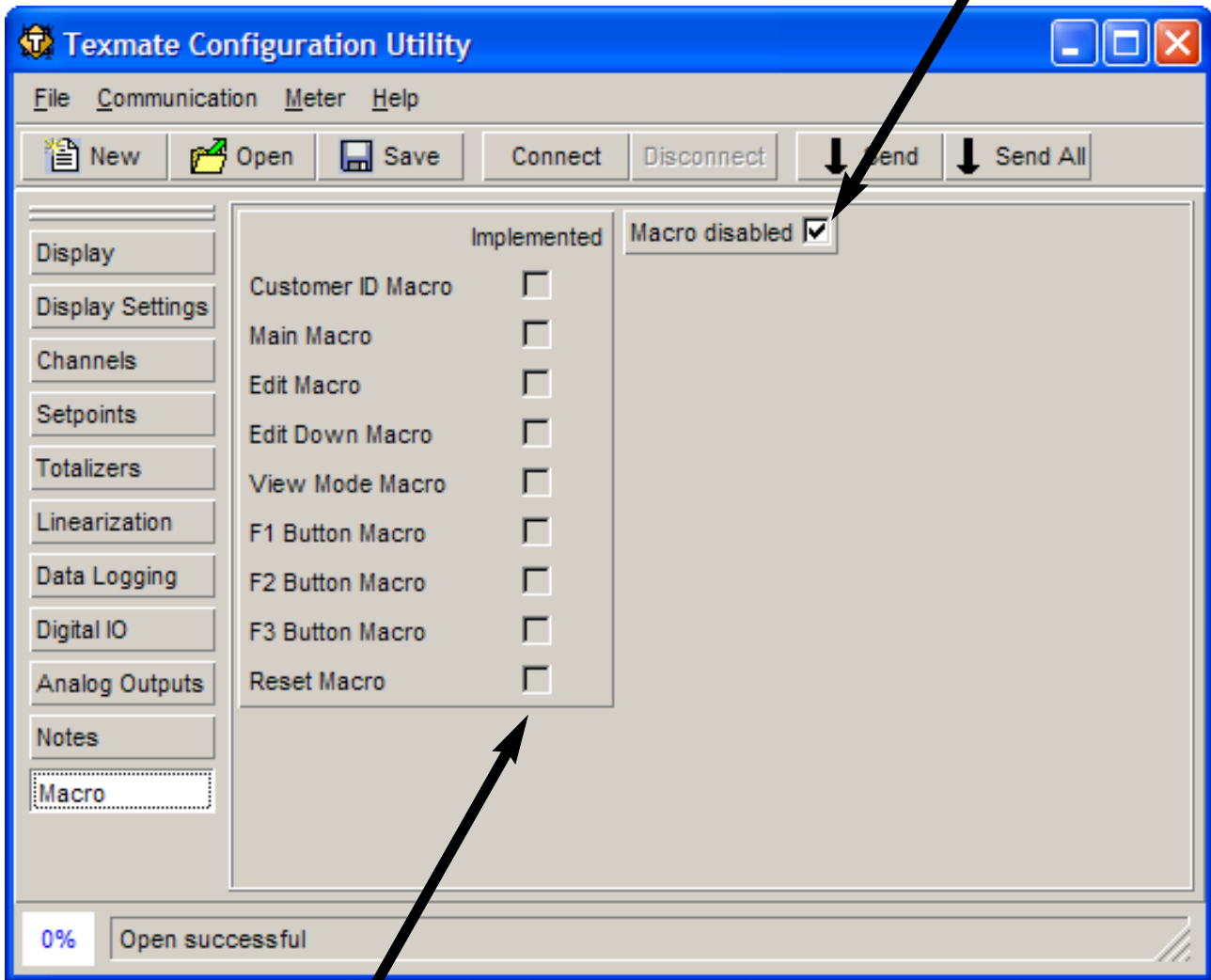




Press button for default calibration values. Exact calibration has to be done for each board separately.



Starts and stops macro execution.



Indicates which macros are implemented.

WARRANTY

Texmate warrants that its products are free from defects in material and workmanship under normal use and service for a period of one year from date of shipment. Texmate's obligations under this warranty are limited to replacement or repair, at its option, at its factory, of any of the products which shall, within the applicable period after shipment, be returned to Texmate's facility, transportation charges pre-paid, and which are, after examination, disclosed to the satisfaction of Texmate to be thus defective. The warranty shall not apply to any equipment which shall have been repaired or altered, except by Texmate, or which shall have been subjected to misuse, negligence, or accident. In no case shall Texmate's liability exceed the original purchase price. The aforementioned provisions do not extend the original warranty period of any product which has been either repaired or replaced by Texmate.

USER'S RESPONSIBILITY

We are pleased to offer suggestions on the use of our various products either by way of printed matter or through direct contact with our sales/application engineering staff. However, since we have no control over the use of our products once they are shipped, NO WARRANTY WHETHER OF MERCHANTABILITY, FITNESS FOR PURPOSE, OR OTHERWISE is made beyond the repair, replacement, or refund of purchase price at the sole discretion of Texmate. Users shall determine the suitability of the product for the intended application before using, and the users assume all risk and liability whatsoever in connection therewith, regardless of any of our suggestions or statements as to application or construction. In no event shall Texmate's liability, in law or otherwise, be in excess of the purchase price of the product.

Texmate cannot assume responsibility for any circuitry described. No circuit patent or software licenses are implied. Texmate reserves the right to change circuitry, operating software, specifications, and prices without notice at any time.



995 Park Center Drive • Vista, CA 92081-8397

Tel: 1-760-598-9899 • USA 1-800-839-6283 • That's 1-800-TEXMATE

Fax: 1-760-598-9828 • Email: sales@texmate.com • Web: www.texmate.com

Texmate has facilities in Japan, New Zealand, Taiwan, and Thailand. We also have authorized distributors throughout the USA and in 28 other countries.

For product details visit www.texmate.com

Local Distributor Address