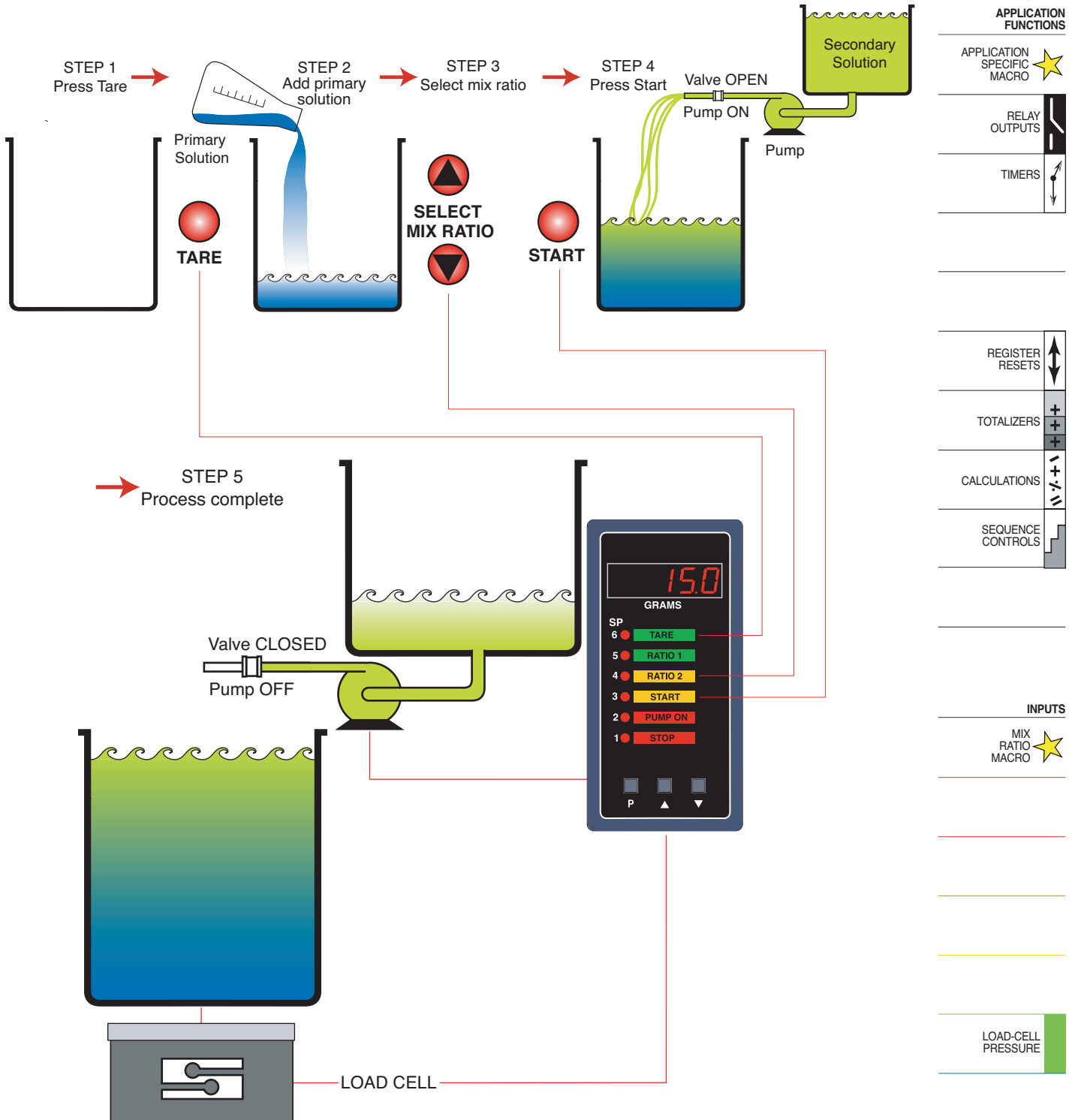


Our customer requires varying amounts of primary and secondary chemicals to be mixed by ratio. To improve mixing, accuracy and save time, the ratio calculation is automatically performed by a macro.

A container is placed on a weighing platform and the platform is tared to 0. The primary product is poured into the container. The operator enters the required mix ratio and presses the start button.

A setpoint starts the secondary chemical blend pump. When the secondary product is close to the calculated mix weight ratio, the setpoint pulses the blend pump motor until the calculated weight is reached. The pump stops and is latched OFF. The display flashes to indicate the process is complete.



APPLICATION VARIATIONS

- Automate complete process.
- PID-OFF control. Secondary solution pump.