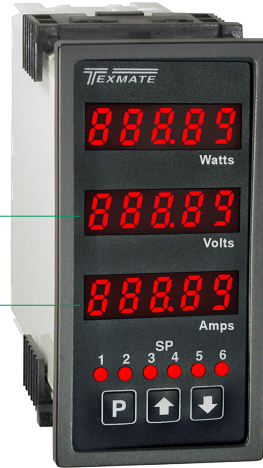
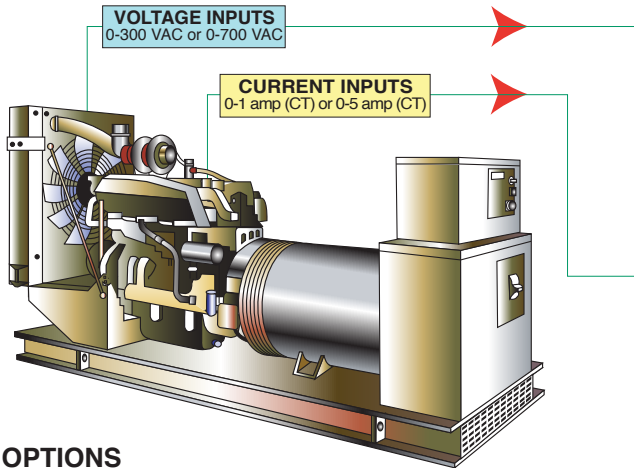


It is no longer necessary to use combinations of transducers to achieve a power measurement and control system. A Texmate Tiger 320 Series DI-503 meter, installed with a single-phase power input module, calculates and displays volts, amps, Hz, watts, watt hours, and power factor from a single-phase 2 or 3-wire voltage and current input.

The optional relay, analog and serial outputs can be configured from all the above parameters to interface with a control or alarm system.



SINGLE PHASE MEASUREMENT AND CONTROL



APPLICATION FUNCTIONS

- RELAY OUTPUTS
- TIMERS
- ANALOG OUTPUTS
- SERIAL OUTPUTS

OPTIONS

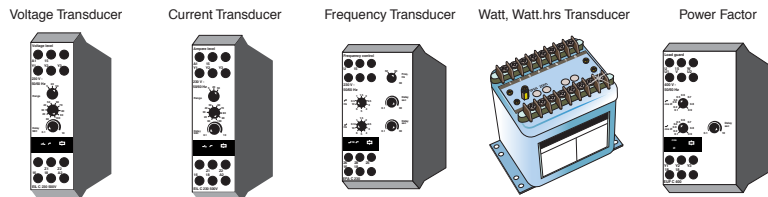
- Up to 6 super smart relay outputs, digitally programmable upper and lower limits.
- Programmable deviation mode, hysteresis mode, latch ON or latch OFF.
- Built-in super smart timers on each setpoint.
- Programmable DOM to eliminate nuisance tripping.
- Power ON inhibit to avoid tripping during power up.
- Dual 4-20 mA or 0-10 V, 16-bit analog output.
- RS-232 or RS-485.
- DeviceNet / ModBus.
- Direct serial printer output.
- Data logging with real-time clock.

DISPLAY AND CALCULATE

- Voltage (R.M.S.).
- Current (R.M.S.).
- Frequency.
- Watts, kilowatts.
- Watt hours, kilowatt hours.
- Power factor monitoring for precise load sensing.*

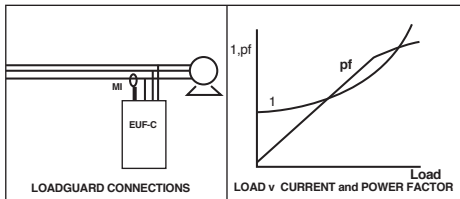
- TOTALIZERS
- CALCULATIONS
- SEQUENCE CONTROLS
- TEXT MESSAGING

MULTIPLE TRANSDUCERS NO LONGER REQUIRED



INPUTS
SINGLE PHASE SMART POWER MODULE

* APPLICATION CONCEPT



Power factor gives an accurate measure of load change, particularly at low to medium loads, where current is dominated by its magnetizing element. Where prompt action is required the optional relays in the Tiger 320 Series meter can be used for protection against broken belts, pump cavitation, conveyor stalling and general overloads.



Suggested Ordering Code Options for This Application

Basic Order Codes	Comments
DI-503E-RRR-PS1-IW02	