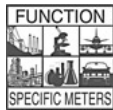




DU-Series



## DU-35ACRMS

**199.9/700V AC RMS Full Scale  
3 1/2 Digit with 0.56" LEDs  
in a 1/8 DIN Case**

**Measuring True RMS voltages up to 700V AC full scale, this meter is ideal for precision RMS measurement of AC voltages with distorted wave forms.**

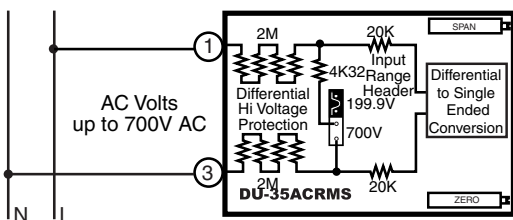
### General Features

The DU-35ACRMS a True RMS AC voltage measuring meter with two header selectable full scale ranges of 199.9V AC RMS and 700V AC RMS. The unique resistively isolated differential input of this meter allows safe measurement of phase to phase voltages. After selecting a new range, re-calibration is required. Display Hold and Display Test functions are also provided.

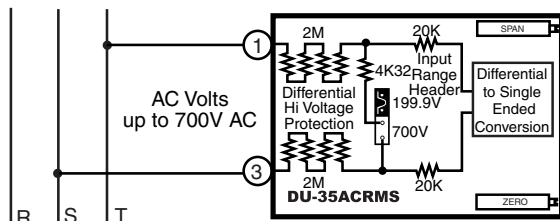
The standard meters have a high efficiency red LED display and user selectable AC power inputs of 100V AC to 120V AC or 200V AC to 240V AC are provided. An Optional 24V AC or an auto sensing isolated AC/DC 24V switching power supply can be ordered. (See ordering information)

### Typical Application Connections

#### AC True RMS Voltage measurement in Single-phase Systems.



#### AC True RMS Phase to Phase Voltage measurement in Multi-phase Systems. May be used with 3 Phase 3 Wire and 3 Phase 4 Wire Systems.



The unique differential input allows safe phase to phase AC true RMS line voltage measurements up to 700V AC.

### Compatibility

The DU-Series have a matching DIN case style that is complementary to the Lynx, Leopard and Tiger family of meters. DU-Meters are the OEM's choice for economical switchboard and process indication. For economy, each model is dedicated to a specific application and designed for quick and easy installation.



### Specifications

- Input Configuration:** .....Differential auto zeroing True RMS AC to DC converter. Inputs are resistively isolated to 1400V from internal ground of meter by 1.94MΩ, so that phase to phase measurements up to 700V AC can be safely made.
- Full Scale Ranges:** .....Two header selectable ranges of 199.9V AC RMS and 700V AC RMS full scale
- Input Impedance:** .....4MΩ (minimum)
- A/D Converter:** .....12 Bit Dual Slope
- Accuracy:** .....± (0.05% of reading + 3 digits)
- Temperature Coefficient:** 100ppm/°C (Typical)
- Warm Up Time:** .....One minute to specified accuracy
- Conversion Rate:** .....3 readings per second
- Display:** .....0.56" hi efficiency Red or optional Green LEDs. Display Hold and Display Test are provided.
- Decimal Selection:** .....Header under face plate, X•X•X•X•
- Over-range Indication:** ...The MSD digit 1 is displayed with all other digits blank
- Power Supply (std):** .....120/240V AC, 50/60Hz. approx 2.5W.  
(Optn) VO-DC/ISO .....Isolated Switcher. 9 to 36V DC/12 to 24V AC  
(Optn) VO-24V .....Isolated Transformer 24V AC ±10%  
(Optn) VO-5V DC .....Non-isolated 5V DC ±10%
- Operating Temperature:** ...-10 to 50 °C
- Storage Temperature:** .....-20 to 70 °C
- Relative Humidity:** .....95% (non-condensing)
- Case Dimensions:** .....1/8 DIN, Bezel: 96x48mm (3.78"x1.89")  
Depth behind bezel 117 mm (4.61") plus 11.8mm (0.47") for Right-angled Connector or 20mm (0.79") for Straight-through Connectors.
- Weight:** .....11 oz., 14 oz when packed

### DU-Series, the OEMs choice for switchboard and process indication

- DU-35AC1/5** .....AC amps, Scaled RMS. (1 or 5 Amp Internal shunt), 3.5 digit
- DU-35ACIRMS1/5** .....AC amps, True RMS. (1 or 5 Amp Internal shunt), 3.5 digit
- DU-40AC11-5** .....AC amps, Scaled RMS. (1 or 5 Amp Internal shunt), 4 digit
- DU-35AC** .....AC volts, Scaled RMS. 199.9/700V AC Header Selectable Ranges, 3.5 digit
- DU-35ACRMS** .....AC volts, True RMS 199.9/700V AC Header Selectable Ranges, 3.5 digit
- DU-40AC** .....AC volts, Scaled RMS. 700.0V AC full scale, 4 digit
- DU-35HZ** .....15.0Hz to 199.9Hz or 15/500Hz. Up to 700V AC input, 3.5 digit
- DU-35** .....DC volts ±2V/±20V/±200V Header Selectable Ranges, 3.5 digit
- DU-35MV** .....DC mV ±50mV, ±100mV, ±200mV Header Selectable Ranges, 3.5 digit

- DU-45** .....DC volts ±2V/±20V/±200V Header Selectable Ranges, 4.5 digit
- DU-45MV** .....DC mV ±50mV/±100mV/±200mV Header Selectable Ranges, 4.5 digit
- DU-35CL** .....Process 4 to 20mA (100.0), easily user scalable, 3.5 digit
- DU-35CLE** .....Process 4 to 20mA (100.0) with 24V DC excitation, scalable, 3.5 digit
- DU-45CL** .....Process 4 to 20mA (100.00), easily user scalable, 4.5 digit
- DU-35P** .....Pressure, strain gage and load cell, 4 and 6 wire, 5V DC excitation, Header Selectable Sensitivity 2mV/V, 5mV/V, 10mV/V, 20mV/V, 3.5 digit
- DU-35J/K** .....Order J or K Thermocouple and °C or °F, 3.5 digit
- DU-35RTD** .....100Ω platinum RTD, 3 or 4 wire, order °C or °F and 0.1° or 1°, 3.5 digit